



**SHENFIELD  
HIGH SCHOOL**

# KEY STAGE FOUR SUBJECT CHOICES 2022 - 2024

[www.shenfield.essex.sch.uk](http://www.shenfield.essex.sch.uk)

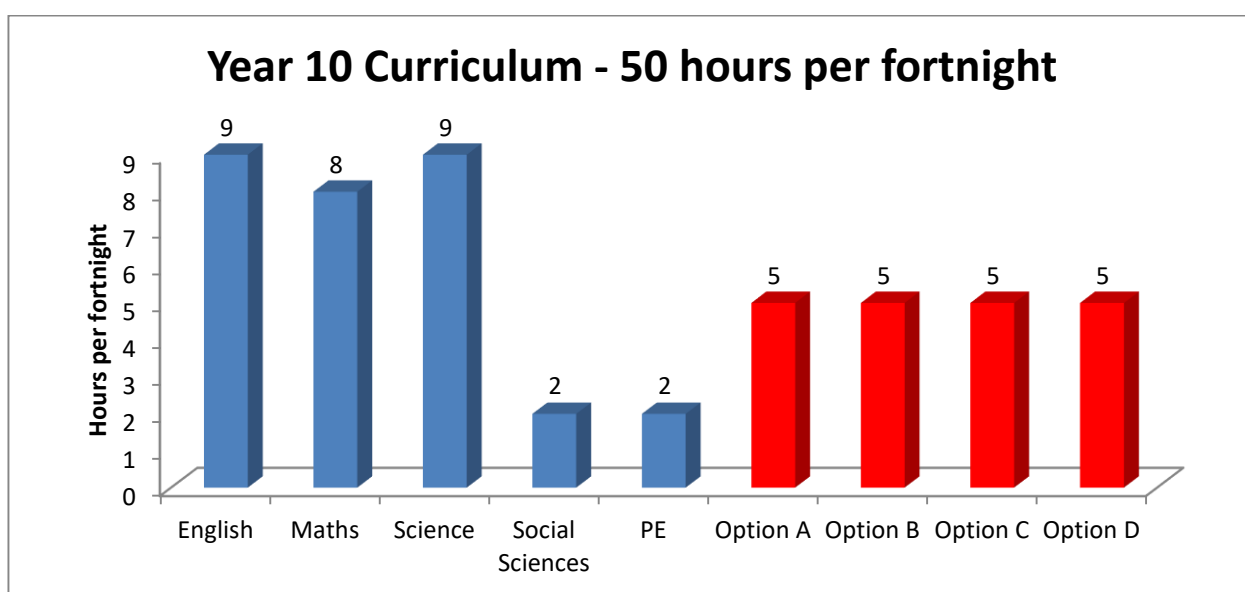




## The Key Stage 4 Curriculum

In Year 10 and Year 11, students have an element of choice which allows them to personalise their curriculum. There are, however, a number of subjects that are compulsory for every student. These are the core subjects that make up approximately 60% of the timetable for each student. The remainder of each student's timetable is composed of a further 4 subjects that students can select from an approved list.

The Year 10 curriculum is outlined below. The school follows a two week timetable cycle with 50 lessons every fortnight:



### Core Subjects

The table below gives summary information about the core subjects at Key Stage 4 and the allocation of teaching time in hours per fortnight:

Subject	Hours in Y10	Summary Information
<b>English</b>	<b>9</b>	Most students will study for 2 GCSEs in English Language and English Literature.
<b>Maths</b>	<b>8</b>	All students will study for a GCSE in Maths
<b>Science</b>	<b>9</b>	All students will study for two GCSEs in Science. Some students will study Separate Sciences for three GCSEs
<b>PE</b>	<b>2</b>	All students take part in Physical Education as a core subject
<b>Social Sciences</b>	<b>2</b>	All students study Social Sciences as a core subject

**Option Subjects** - Students will choose four subjects from this list:

**GCSEs:**

Fine Art	Business Studies	Computer Science
Drama	Film Studies	Food Preparation and Nutrition
French	Geography	History
Music	Physical Education	Sociology
Spanish	Triple Science	

**BTECs:**

Health and Social Care

**Vocational Award:**

Performing Arts  
Enterprise and Marketing  
Engineering  
Music Technology



The school will offer advice, guidance and support to each student to ensure that appropriate choices are made. Some subjects have eligibility criteria based on ability and/or aptitude.

**Please note that subjects will run only if the number of students applying makes the course viable.**

**Enhanced Support**

A small number of students will receive additional support to help them make progress with the core subjects and study skills required by the other subjects being studied. These students will receive enhanced support instead of one option subject.

**Department for Education (DfE) Guidelines**

School Performance is measured on the average GCSE points score for students across a range of 8 subjects, as follows:

- English and Maths.
- At least 3 subjects from Sciences, Computer Science, Geography, History and Modern Foreign Languages.
- 3 additional approved subject choices.

Selecting from these groups of subjects ensures an appropriately balanced curriculum according to current government guidelines.

In addition, the English Baccalaureate (EBacc) is the term given to the following set of subjects at GCSE: English Language and Literature, Maths, the Sciences, Geography or History, a Modern Foreign Language. It is the government's ambition that 75% of pupils nationally will study the EBacc combination of subjects by 2022.

Students interested in pursuing a university education should read the Russell Group's "Informed Choices" publication to ensure that the GCSEs you choose facilitate the choices you want to make post-16 and beyond.

<https://www.informedchoices.ac.uk>



## Contents

The Key Stage 4 Curriculum	2/3
Contents	4
<b>KS4 Core Subjects</b>	
Careers Education and Guidance including Work Experience	6
English Language	7
English Literature	8
Mathematics	9
Physical Education	10
Science	11/12
Social Sciences	13
<b>KS4 Options</b>	
Fine Art	15
Business Studies	16/17
Computer Science	18
Drama	19/20
Film Studies	21
Food Preparation and Nutrition	22/23
French and Spanish	24
Geography	25
History	26
Music	27
Physical Education	28/29
Sociology	30
Vocational Award in Enterprise and Marketing	31/32
BTEC Level 2 Tech Award in Health and Social Care	33
Vocational Level 2 Award in Engineering	34/35
Vocational Level 2 Award in Music Technology	36
Vocational Level 2 Award in Performing Arts	37
Looking ahead to the Sixth Form	38/39
Timeline of the Option Process	40
Check Your Options (DfE Guidance)	41
Submitting Your KS4 Option Choices	42
Options Checklist Form	43



# KS4 Core

# Careers Education, Guidance and Work Related Learning (Core)

During your Social Sciences lessons and tutor time in Year 10, you will be studying careers and educational pathways. This will include using web-based careers resources, as well as Sixth Form and College prospectuses, to research your Post-16 options and future career ideas.

There are a number of opportunities and events related to careers education and guidance as well as work-related learning at Key Stage 4:



## Careers Fair

This is held on an annual basis for all students in Years 8 – 13. Many representatives from employers, colleges, apprenticeship providers and universities come to this event and are available to give advice and guidance on the options that you have after Key Stage 4 and Key Stage 5.



## Careers Day and Practice Interviews

At the end of Year 10, you have the opportunity to be interviewed by a professional from local industry in order to help you prepare for a work or academic interview. Students see this as a very useful event and the people who interview our students always speak very highly of them. The practice interviews take place during a dedicated careers day where you will also take part in a variety of other careers and work-related activities.

## Writing your CV and Personal Statement

In your Social Sciences lessons you get the opportunity to write your CV and Personal Statement. These are useful for work experience applications, job applications and academic applications.



## Employer Engagement Day

During the summer term of Year 10, you will take part in the Employer Engagement Day which will give you the opportunity to hear from employers from a variety of different industries, carry out work related activities for industry areas of your choice, and ask any questions you may have about the careers you are interested in.

## Impartial Careers Advice and Guidance

All students have access to impartial Careers Guidance meetings with our Careers Advisor. During these one to one sessions each student receives their own individual Action Plan to help them work towards achieving their goals.

## Careers Talks

We often invite professionals from a variety of different industries to talk to students about career opportunities in their areas of expertise. In recent years, we have had talks about careers in Health and Social Care, Law, Construction, Engineering, Fashion, Insurance and Banking. Students who are interested in each particular industry are invited to attend.



## Contacts:

Miss Kadem (Team Leader: Careers and Work Related Learning) email: [a.kadem@shenfield.essex.sch.uk](mailto:a.kadem@shenfield.essex.sch.uk)

Mrs Utton (Careers Administrator) email: [l.utton@shenfield.essex.sch.uk](mailto:l.utton@shenfield.essex.sch.uk)



# GCSE English Language (Core)

**Exam Board:** AQA

**Equivalence:** 1 GCSE

## What will I learn in GCSE English Language?

Students studying English Language will also study English Literature which counts as a separate GCSE. It is important to remember that the course is 100% examined. The GCSE English Language course serves as the principal method of teaching and testing Key Stage 4 of the National Curriculum for English. Your work will develop your skills in the following areas:

### Speaking and Listening

You will learn to be an intelligent listener able to respond thoughtfully to other people's words and feelings. You will learn to discuss, converse and persuade with greater confidence, adapting your words to a variety of purposes and audiences. You will achieve either a distinction, merit or pass grade in speaking and listening.

### Reading

You will learn to cope with the demands of reading a wide range of materials, including both fiction and non-fiction, from various periods of time.

### Writing

You will develop your ability to write personally and imaginatively and to write in a variety of forms and styles. Of course, attention to correct spelling and an understanding of punctuation and grammar are essential.

## What do I need to know before I can start the course?

Keep working on basic skills such as spelling and punctuation. Do as much reading as possible from as many different sources, from books to newspapers. Develop a broader understanding of the wider world and explore the main events and issues that are happening today.

## What can I do after the course? What careers will this course be useful for?

As you probably already realise, the importance of your GCSE English Language qualification to whatever future plans you have regarding higher or further education or employment cannot be emphasised strongly enough. All careers are dependent upon acquiring and mastering communication skills.

You must prove yourself competent in English Language, if you are to contemplate any further education and, of course, to function effectively as an adult in any working or leisure environment.

If you do well in your GCSEs you may wish to take up English Language or English Literature, or both, at A level. These subjects are highly popular with students in the Sixth Form at Shenfield High School. Securing a good grade in English Language or English Literature is essential if you wish to study A Levels in the future.

## Who can I talk to for more information?

Any teacher in the English Department.

Mr Clifford (Assistant Headteacher: English) email: [b.clifford@shenfield.essex.sch.uk](mailto:b.clifford@shenfield.essex.sch.uk)

## What websites can I check out?

<http://www.aqa.org.uk/subjects/english/gcse/english-language-8700>



# GCSE English Literature (Core)

**Exam Board:** AQA

**Equivalence:** 1 GCSE

## What will I learn?

The main aim of the Literature course is to develop your ability to read, understand and respond to all types of literary texts. You will, therefore, study a range of literature covering prose, poetry and drama. You will study a mixture of modern literature and some works written before the 20<sup>th</sup> Century, including Shakespeare. The course is 100% examined.

The syllabus offers a wide range of texts from which to choose, and the specific choice of texts will vary from one class set to another, depending on your ability and interests. It is always our aim, as teachers, to 'stretch' you so that you can achieve your full potential.

## What do I need to know before I can start the course?

Keep working on basic skills such as spelling and punctuation. Do as much reading as possible.

## What can I do after the course? What careers will this course be useful for?

GCSE Literature is a formal qualification which is a distinctly separate award from GCSE English Language. It is therefore a valuable asset as a qualification in its own right and of equal weight to any of your other GCSE subjects.

If you wish to pursue your studies of English to A-level in the Sixth Form, then a high level of achievement in **both** English Language and Literature will be required.

## Who can I talk to for more information?

Any teacher in the English Department.

Mr Clifford (Assistant Headteacher: English) email: [b.clifford@shenfield.essex.sch.uk](mailto:b.clifford@shenfield.essex.sch.uk)

## What websites can I check out?

<http://www.aqa.org.uk/subjects/english/gcse/english-literature-8702>



# GCSE Mathematics (Core)

**Exam Board:** Edexcel

**Equivalence:** 1 GCSE

## What will I learn?

GCSE Mathematics will build upon what has been studied in Years 7, 8 and 9. The course extends this knowledge by further developing mathematical skills as well as introducing new topics. Problem solving in Mathematics is now an integral part of the course and involves using the mathematical skills learnt and applying them to real life applications and unfamiliar problems.

## What do I need to know before I can start the course?

Higher level GCSE entries are usually made for students who are working above a grade 5, Foundation entries will be made for those working up to a grade 5.



## How will I be examined?

All students will take a linear course with three examination papers at the end of Year 11. One of these is a non-calculator paper and the others are calculator.

## What can I do after the course? What careers will this course be useful for?

A good grade at Mathematics GCSE is required to study any subject at University, usually at least a grade 4 or 5. It is also the passport to many jobs, Sixth Form or Further Education courses. All students are strongly advised to strive for the best grade possible.

## Who can I talk to for more information?

Mr Dennehy (Team Leader Mathematics) email: [n.dennehy@shenfield.essex.sch.uk](mailto:n.dennehy@shenfield.essex.sch.uk)

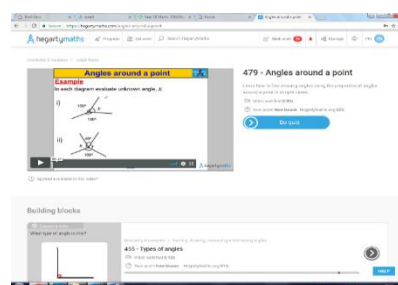
Mr Russell (Course Leader for Key Stage 4) email: [p.russell@shenfield.essex.sch.uk](mailto:p.russell@shenfield.essex.sch.uk)

Or any member of the Mathematics Department.

## What websites can I check out?

<http://qualifications.pearson.com/en/qualifications/edexcel-gcses/mathematics-2015.html>

[hegartymaths.com](http://hegartymaths.com) is a useful online resource covering all GCSE Mathematics topics





## Physical Education (Core)

During Year 10 all students will take two one-hour lessons of Physical Education each fortnight. In year 11 students will take one one-hour lesson a fortnight. (Details of GCSE Physical Education are given later in this booklet.)

### What will I gain from the course?

1. The opportunity to develop physical skills in games, swimming, fitness and athletics. (Each group will be involved in a discussion to decide which activities they wish to cover each year.)
2. An awareness of the different types of sports/exercise you may wish to pursue when you are older.
3. The opportunity to develop positive attitudes towards your own fitness and sports participation.
4. An appreciation of the importance of exercise to a healthy lifestyle.
5. The opportunity to take Leadership Awards that will enhance your organisation, communication and inter-personal skills.

### What will I be doing in lessons?

Extending your ability in the specialist areas that you select, as well as trying some additional activities. Your activities will be taken from the following:

American Football	Cricket	Football	Netball	Table Tennis
Athletics	Dance	Handball	Rounders	Tennis
Badminton	Dodgeball	Hockey	Rowing	Trampolining
Basketball	Extreme Golf	Kabudi	Rugby	Ultimate Frisbee
Benchball	First Aid	Lacrosse	Softball	Volleyball
Cheerleading	Fitness	Orienteering	Swimming	

### What kit do I need?

- 1 Shenfield High School polo shirt with school logo
- 1 pair mainly white trainers with **non-marking sole**
- 1 pair plain white socks
- 1 pair black shorts with school logo
- 1 pair football boots
- 1 pair long plain black football socks
- 1 Shenfield High School reversible rugby jersey
- Shin pads
- Shenfield High School valuables bag
- Gum shields are advisable*

#### *Optional items for outdoor lessons:*

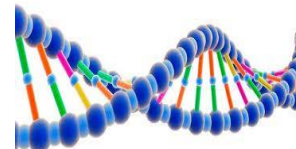
- Shenfield High School tracksuit top
- Plain black jogging/tracksuit bottoms or Shenfield High School P.E. tracksuit.



# GCSE Combined Science - Trilogy: Double Award or Separate Sciences: Biology, Chemistry, Physics

**Exam Board:** AQA

**Equivalence:** 2 GCSEs (Combined Science) or 3 GCSEs (Biology, Chemistry, Physics)



## Combined Science - Trilogy: Double Award

### What will I study?

Students studying Combined Science - Trilogy: Double Award will cover the three science disciplines in the traditional fashion. Combined Science - Trilogy takes a logical and coherent journey through the content of the GCSE specification.

Practical work is not only one of the most engaging parts of a science education but is also essential for your understanding of scientific theory. There are 16 required practical tasks that students need to complete during the course. You will learn aspects of Biology, Chemistry and Physics that are important to understand the growing impact science is having on our society and our lives. These include: diet and exercise, medicine, drugs, materials for construction, modern chemicals, the atmosphere, electricity and astronomy. A comprehensive list of topics is available from the AQA website [www.aqa.org.uk/subjects/science/gcse](http://www.aqa.org.uk/subjects/science/gcse)

### Examinations:-

**Six papers:** Two Biology, two Chemistry and two Physics. Each will assess different topics.

**Duration:** All the papers are 1 hour 15 minutes.

**Tiers:** Foundation and Higher.

**Weighting:** The papers are equally weighted. Each is worth 16.7% of the grade and has 70 marks.

**Questions:** Multiple choice, structured, closed, short answer and open response.

## Separate Science: Biology, Chemistry, Physics (counts as one of your options choices)

### What will I study?

Studying Separate Sciences means students will cover more content than GCSE Combined Science: Double Award. The GCSE Biology, Chemistry and Physics courses will provide great preparation for AS and A-level, without overlapping content. You will learn the more in-depth characteristics of Biology, Chemistry and Physics that are important to understand the growing impact science is having on our society and our lives. These include: Cell biology, Bioenergetics, Ecology, Quantitative chemistry, Organic chemistry, Magnetism and Electromagnetism, Particle models of matter and Space physics to include but a few. A comprehensive list of topics for each of the three sciences is available from the AQA website [www.aqa.org.uk/subjects/science/gcse](http://www.aqa.org.uk/subjects/science/gcse)

As with the Combined Science route, the practical elements introduced throughout the course are both a requirement of the course and essential for improving your understanding. There are eight required practical tasks to complete for each of the three disciplines (Biology, Chemistry, and Physics)

### Examinations:-

**Six papers:** 2 for each discipline. Each paper will assess different topics.

**Duration:** All papers are 1 hour 45 minutes (30 minutes longer than GCSE Combined Science: Double Award papers)

**Tiers:** Foundation and Higher.

**Weighting:** Papers are equally weighted, worth 50% of the grade and worth 100 marks.

**Questions:** Multiple choice, structured, closed short answer and open response.

**What do I need to know before I can start the course?**

There are no entry requirements for this course. All students study GCSE Science.

**What can I do after the course? What careers will this course be useful for?**

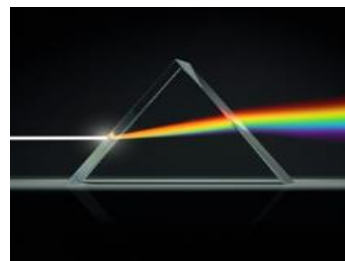
This is a core subject. Just about every career and college or school, will be looking for this qualification as an entry level requirement. In addition, it is essential for any career with a scientific content. This specification provides you with a solid foundation for progression to A-level sciences regardless of whether the 2 GCSE or 3 GCSE course is chosen. A wide variety of careers are accessible for students with A-Levels in science subjects, such as becoming a forensic scientist, doctor, engineer, pharmacist, geologist, astronomer, veterinary surgeon, field biologist, meteorologist, environmentalist...

**Who can I talk to for more information?**

Any Science teacher.

Dr Pope (Team Leader: Science and Engineering) email: [g.pope@shenfield.essex.sch.uk](mailto:g.pope@shenfield.essex.sch.uk)

**Which websites can I check out?** [www.aqa.org.uk/subjects/science/gcse](http://www.aqa.org.uk/subjects/science/gcse)



## Social Sciences (Core)

Students will follow a non-examined course in Social Sciences at KS4. This consists of vital subject areas which support the wider curriculum and the development of young people.

### What will I Learn?

Topics studied include Politics, Money Management, Religious Education, Current Affairs, PSHEE, Careers Education, Health Education and First Aid.

You will also learn crucial skills for life, developing self-confidence and work related skills and within this, will further develop your literacy and numeracy skills.

### Who can I talk to for more information?

Mrs Hollingsworth (Team Leader: Social Sciences) email: [l.hollingsworth@shenfield.essex.sch.uk](mailto:l.hollingsworth@shenfield.essex.sch.uk)





# KS4 Options



## GCSE Fine Art

**Exam Board:** AQA

**Equivalence:** 1 GCSE

### What will I learn?

You will explore a variety of media such as painting, sculpture, textiles, photography and digital manipulation. You will learn how to research, analyse and respond to artists, cultures and designers. In your first project you will explore 'Figures in Interiors'. Throughout this project you will study several different artists who painted/sculpted figures and interiors and experiment with creating a piece of art influenced by both contemporary and traditional artists. You will explore and develop your own strengths through use of different medias such as; stencilling and graffiti, photography, painting, drawing and collage. The additional coursework units will also allow you to explore techniques such as Batik, textiles, ceramics and sculpture, among other exciting medias. The projects will teach you how to use your drawing and research to develop your own ideas into a successful outcome. You will also have the opportunity to attend trips, clubs and workshops specially designed to enhance your learning experience.

### What do I need to know before I can start the course?

You will need to have competent drawing skills and a passion for the subject. You will also need to be able to present work neatly in sketchbooks or on display boards. Independent study is essential for this course as you are required to complete many paintings/drawings in your free time.

### What can I do after the course? What careers will this course be useful for?

Following Fine Art GCSE you could do Fine Art A Level. It would also complement other creative courses like textiles, photography and animation. This course is useful for a number of careers such as teaching, childcare, graphics, design, animation, jewellery making, hair and beauty, window dressing, marketing, sales, interior design, architecture, fashion, photography, illustration and many more.

### Who can I talk to for more information?

Mrs Kemp (Course Leader) email: [d.kemp@shenfield.essex.sch.uk](mailto:d.kemp@shenfield.essex.sch.uk)

Miss Murphy (Art Teacher) email: [a.murphy@shenfield.essex.sch.uk](mailto:a.murphy@shenfield.essex.sch.uk)

Please speak to staff for exemplar work. Also feel free to chat to any of our Year 10 and 11 students.

### What websites can I check out?

[www.tate.org.uk](http://www.tate.org.uk)

[www.vam.ac.uk](http://www.vam.ac.uk)

[www.britishmuseum.org](http://www.britishmuseum.org)





# GCSE Business Studies

**Exam Board:** Edexcel

**Equivalence:** 1 GCSE

**If the following concepts interest you, then you should consider studying Business Studies.**

- communicating and explaining your ideas
- thinking creatively and making decisions
- working with numbers to solve business problems
- learning about the world of business through real and relevant local and international brands

Business Studies is not just a theory-based subject, it is applied to the behaviour and decisions of firms of all sizes, which impact us as individuals daily. It will help you to learn about businesses and the way they operate in today's society. You will gain skills which will be useful in a wide range of jobs, in the further study of Business Studies and in your personal life as a global citizen.

## **What will I learn?**

You'll start by exploring the world of small businesses through the lens of an entrepreneur. How and why do business ideas come about? What makes a successful business? You'll learn how to develop an idea, spot an opportunity and turn it into a successful business. You will understand how to make a business effective, manage money and see how the world around us affects small businesses and all the people involved.

Then you'll move on to investigating business growth. How does a business develop beyond the start-up phase? You'll learn about key business concepts and issues and decisions you need to make when growing a business and working in a global business. You'll learn about meeting customer needs, making marketing, operational, financial and human resourcing decisions and you'll explore how the wider world impacts the business as it grows.

## **What do I need to know before I can start the course?**

It doesn't matter that you haven't studied business prior to taking this course. You might have an interest in business, and want to start your own business one day. You may have an enquiring mind and be interested in learning about the world around you, how businesses are set up, and what it is that makes someone a great entrepreneur. This course will help you to understand all this and more.

## **How will I be assessed?**

You will be assessed via 2 90 minute, 90 mark written exams, each worth 50% of the total GCSE.

Paper 1 – Investigating Small Business

Paper 2 – Building a Business

There are three sections in the paper. Each section is ramped, starting with multiple choice questions, moving to short answer questions and ending with extended writing. Sections B and C are based on real life, relevant business contexts and examples.





### **What can I do after the course? What careers will this course be useful for?**

After this qualification you'll understand the world of business and have developed skills in:

- Making decisions and developing persuasive arguments
- Creative and practical problem solving
- Understanding data, finance and communication

It's also a great step in preparing you for further and higher education such as A-levels and BTEC courses. A GCSE Business course could prepare you for an entrepreneurial role and help you to gain an understanding of what is involved in a business-related profession, like accountancy, law, marketing or the leisure and tourism industry.

### **Who can I talk to for more information?**

Any member of staff from the Business and Economics department situated at the top of T block.

Mr Shearing (Team Leader: Business Studies) email: [b.shearing@shenfield.essex.sch.uk](mailto:b.shearing@shenfield.essex.sch.uk)

Miss Weedon (BTEC Programme Leader) email: [j.weedon@shenfield.essex.sch.uk](mailto:j.weedon@shenfield.essex.sch.uk)

### **What websites can I check out?**

<https://mrshearingbusinessstudies.weebly.com/>

<https://qualifications.pearson.com/en/qualifications/edexcel-gcses/business-2017.html>

<https://www.bbc.co.uk/news/business>

# GCSE Computer Science

**Exam Board:** OCR

**Equivalence:** 1 GCSE

## What will I learn?

This is a challenging but exciting GCSE qualification that is targeted at the more academically minded student. The course contains two externally moderated examinations. The course provides a real, in-depth, understanding of how computer technology works with a solid insight of what goes on 'behind the scenes'. In addition, you will learn computational thinking skills that will support you in all aspects of professional life as well as with your computer programming using the Python programming language.

## What can I do after the course? What careers will this course be useful for?

This course will enable you to develop critical thinking, analysis and problem solving skills, which can be transferred to further learning and to everyday life. If you want to go on to higher study and employment in the field of Computer Science you will find that this course provides a valuable stepping stone. Research shows that graduates with a Computer Science degree are highly sought after for careers in finance, engineering, teaching, software development and many others.

## What do I need to know before I can start the course?

To undertake the Computer Science GCSE course, you should have made good progress by actively participating in a range of learning activities in all of your KS3 Computer Science lessons. To be successful on the course you will need to display a number of analytical and logical thinking skills and be prepared to work within challenging timeframes with a range of technology. It is essential to have a strong mathematical knowledge.

## Who can I talk to for more information?

Mr Maling (Head of Computer Science) [d.maling@shenfield.essex.sch.uk](mailto:d.maling@shenfield.essex.sch.uk)

Miss Smith (Computer Science Teacher) email: [e.smith@shenfield.essex.sch.uk](mailto:e.smith@shenfield.essex.sch.uk)

## What websites can I check out?

<https://www.ocr.org.uk/qualifications/gcse/computer-science-j277-from-2020/>





# GCSE Drama

**Exam Board:** AQA

**Equivalence:** 1 GCSE

## What will I learn?

AQA's GCSE (9-1) qualification in Drama has been designed to be a practical, engaging and creative specification for students to study. It will provide opportunities to examine drama and the work of others, to explore a range of drama as a practical art form, and to work independently to create your own drama performances making informed artistic choices. You will also have the opportunity to visit professional productions to gain a greater appreciation of theatre as an actor and audience member. The specification is designed to create independent students, critical thinkers and effective decision-makers – all personal attributes that can make students stand out as they progress through their education and into employment.

## The examination

Students will complete three components; one devised performance, one text performance and one written exam. Students must study two different texts in the GCSE course.

### Component title

#### Understanding drama (written)

Mark: 80, worth 40%

1.45 hrs Written exam.

### Component overview

This component requires students to study a text and a performance.

For Section A, students study one performance text in detail from a set list given by the exam board. It assesses students' knowledge and understanding of how drama is developed and performed.

In Section B, students will be required to analyse and evaluate a live theatre performance they have seen.

### Devising drama (practical)

Mark: 80, worth 40%

Course work and performance to be marked by a Shenfield teacher and presented to an audience.

Students will create their own devised performance based on a chosen stimulus. In addition to the performance, students will be marked on an accompanying portfolio with evidence of the process and decisions made whilst creating and developing their performance.

### Texts in practice (practical)

Mark: 40, worth 20%

Course work and performance to be marked by an external examiner and presented to an audience.

Students will perform two different extracts from a professional play text.

This will be performed in front of a visiting examiner and live audience.

### **What do I need to know before I can start the course?**

GCSE Drama is an extremely engaging course, is highly practical and requires both talent and teamwork skills; candidates must be highly reliable and committed. A flair for acting and proficient literacy skills are essential. You will need to be prepared to commit to the written elements as well as the performances. The portfolio in regards to the devised work should be a creative document including photographs, drawings and rehearsal techniques that demonstrates and clearly outlines how you evolve and shape the Drama. In this way students can still adopt an imaginative way in which to work that is not constricted to only the written medium. Students will need to practise and rehearse outside of school hours when you come to the performance modules and commit to ensuring excellent knowledge of theatre when answering the written exam.

**Extra-curricular opportunities** include acting or taking on a technical role in the main school production, Drama clubs, directing the lower school production, specialist workshops and theatre trips designed purely for your aptitude and needs.



### **What can I do after the course? What careers will this course be useful for?**

GCSE Drama students can proceed to study A-level Theatre Studies at Shenfield High School.

### **What will Drama give me?**

Drama encourages good communication, commitment and concentration skills, an understanding of other points of view and a strong sense of working in a team and most importantly confidence; all are qualities of real value in the workplace of any career.

### **Who can I talk to for more information?**

Ms Sherwood (Course Leader: Drama) email: [e.sherwood@shenfield.essex.sch.uk](mailto:e.sherwood@shenfield.essex.sch.uk)

### **What websites can I check out?**

<https://www.aqa.org.uk/subjects/drama/gcse/drama-8261/specification-at-a-glance>

# GCSE Film Studies

**Exam Board:** EDUQAS

**Equivalence:** 1 GCSE

## What will I learn?

The Film Studies GCSE has been designed to not only ignite a passion for film but also to encourage broader cultural and historical perspectives on this academic area of study. This course of learning encourages you to watch, engage critically with, and explore a wide range of film; to develop and sustain confident personal responses to film via textual analysis; and to enjoy a variety of critically acclaimed films across the major genres, including films from different cultural perspectives, and from the 1950s to the present day.

You will read about, watch, hear and discuss different types of film texts and you will produce a screenplay of your own. You already know a lot about film, from your own general knowledge and from films being used in the KS3 curriculum to support learning, this GCSE builds on this understanding and you will learn how to express your ideas about film in a more mature and thoughtful manner. Some of the films studied over the two years will include:

- Attack The Block (2011)
- ET (1982)
- Invasion of the Body Snatchers (1956)
- District 9 (2009)
- Whiplash (2015)
- Tsotsi (2005)

## What do I need to know before I can start the course?

No previous knowledge is required, just an active curious mind. It must be stressed, however, that you will not be 'watching films' all of the time and the course is a very academic option, requiring a great deal of concentration and focus from all students.

## What can I do after the course? What careers will this course be useful for?

Film Studies is a skills based course. It allows you to develop your ability to manage your time and meet deadlines, work individually to organise, plan and create your own screenplays and ideas for films. These attributes are valuable for entry in numerous careers and courses such as: Teaching, Journalism, Advertising, Marketing and further study at A Level.

## Who can I talk to for more information?

Mr Sheriff who can be found in room i71 or email: [m.sherriff@shenfield.essex.sch.uk](mailto:m.sherriff@shenfield.essex.sch.uk)

## What websites can I check out?

<http://www.eduqas.co.uk/qualifications/film-studies/gcse>





# GCSE Food Preparation and Nutrition

**Exam Board:** AQA

**Equivalence:** 1 GCSE

## What will I learn?

GCSE Food Preparation and Nutrition is an exciting and creative Science based Food course, which focuses on practical cooking skills to ensure you develop a thorough understanding of nutrition, food provenance and the working characteristics of food materials. At its heart, this qualification focuses on nurturing your skills through Science experiments to give you a strong understanding of nutrition.

The course is split 50% non-exam assessment and 50% final written examination. The non-exam assessment consists of one Food Science investigation (15%) (1,500 to 2,000 word report) and one Food preparation assessment (35%) (plan, prepare, cook and present a 3 course menu). A final written examination worth (50%) of the final mark takes place in the Summer Term of Year 11.

## Course content:

Food preparation skills are integrated into five core topics:

1. **Food, nutrition and health** – Macro Nutrients, Micro Nutrients, Nutritional Needs and Health.
2. **Food science** – Cooking of Food, Heat Transfer and the Functional and Chemical Properties of Food.
3. **Food safety** – Food Spoilage, Contamination and the Principles of Food Safety.
4. **Food choice** – Factors affecting Food Choice, British and International Cuisines, Sensory Evaluation, Food Labelling and Marketing.
5. **Food provenance** – Environmental Impact and Sustainability of Food, Food Processing and Production.

## What do I need to know before I can start the course?

This is an applied Science course and **not** a vocational course. Its demands are much more than just practical work. You will need to have a curious mind about how the industry functions, the importance of nutrition and health and safety aspects within the industry. You will also need to have a strong interest in Science.

**Please note**, you must provide your own ingredients for practical lessons. However, you will not be cooking every lesson. Practical work contributes for approximately 15% of your final grade.

## EXAM: Food preparation and nutrition (50%) Written exam: 1 hour 45 minutes

The paper will be made up of 20 multiple choice questions worth 20 marks, and 5 questions each with a number of sub questions worth 80 marks.

## NON-EXAM ASSESSMENT (NEA): Task 1: Food Science investigation (15%) Written Report

Assessing understanding of the working characteristics, functional and chemical properties of ingredients. Students will submit a written report (1,500–2,000 words) including photographic evidence of the practical investigation.

## NON-EXAM ASSESSMENT (NEA): Task 2: Food preparation assessment (35%) Written Portfolio

Students' knowledge, skills and understanding in relation to the planning, preparation, cooking, presentation of food and application of nutrition related to the chosen task. Students will prepare, cook and present a final menu of three dishes within a single period of no more than three hours, planning in advance how this will be achieved. Students will submit a written portfolio (15 A4 pages) including photographic evidence.





## What can I do after the course? What careers will this course be useful for?

Students taking Food are able to develop their skills further. The course prepares students for study towards degrees with a focus on Food and Nutrition Science, Food Manufacturing, Food Biotechnology (a big growth area) and links in well with Sports Science degrees. This GCSE also prepares students who are looking for apprenticeships in the catering industry and qualifies students for a range of catering courses.

### Possible careers:

The Food Industry and the area of Health and Nutrition are at the forefront of our society today. Opportunities in this field are continually growing. Career opportunities can include Dietician, Midwife, General Practice Nurse, Nutritionist, and Paediatrician.

In addition, should creativity be your strength, your career path may include Food Journalism and Photography, Food demonstration, Retail Sales and Marketing or a rewarding career as a Food Product Development (Technologist). Other possibilities include Social work, Teaching or Environmental Health Officer. You could also combine food with science, media or psychology for some interesting career paths.

### A GCSE in Food Preparation and Nutrition could lead into careers such as:

Baker	Barista	Cake Decorator
Catering Engineer	Catering Manager	Catering Supervisor
Chef	Conference Organiser	Consumer Scientist
Paediatrician	Executive Chef	Food Processing Worker
Food Technologist	Housekeeper	Kitchen Assistant
Kitchen Manager	Publican-Licensee	Sous Chef
Waiting/Bar Staff	Teaching	Nutritionist
Dietician	Environmental Health Officer	Food Journalism

### Who can I talk to for more information?

This course is taught by Mrs Hall who is in school on Tuesdays, Wednesdays and Fridays in T55, or you can email [r.hall@shenfield.essex.sch.uk](mailto:r.hall@shenfield.essex.sch.uk)

### Additional information:

Students will be expected to bring in their own ingredients and products for **all** practical based lessons and therefore must have good organisational skills. You will also have a range of theory work to cover and will **not** be cooking every lesson.

### What websites would give me more information?

The 12 key practical skills set by AQA for this course, which we cover in Year 10, are found here:  
<https://www.aqa.org.uk/subjects/food/gcse/food-preparation-and-nutrition-8585/subject-content/food-preparation-skills>

During the course we will also differentiate between the skill levels of your dishes, notably when we complete your NEAs. Suggested basic, medium, and complex recipes are here:  
<https://filestore.aqa.org.uk/resources/food/AQA-8585-NG-SL.PDF>

Any website on the careers mentioned above will give you guidance on a career path you could follow.  
<https://www.careersincatering.co.uk/>



# GCSE French and Spanish

**Exam Board:** Edexcel (both)

**Equivalence:** 1 GCSE

## What will I learn?

Language learning is fun, yet challenging. Through the GCSE syllabus you will gain the opportunity to explore a range of topics and themes whilst continuing to develop your ability to speak and write in Spanish and French. Lessons focus on your ability to understand the language and to communicate effectively.

## What do I need to know before I can start the course?

- To be successful on the **French or Spanish GCSE course**, you will need to have demonstrated good progress throughout Years 7, 8 and 9 by actively participating in a range of learning activities both in lessons and through PREP tasks.

You must be prepared for an academic course which requires regular vocabulary learning, completion of PREP tasks on a weekly basis, good organisation and time management, but above all, resilience.

## What does the course involve?

You must complete all 4 components in either Foundation Tier (Grades 1-5) or Higher Tier (Grades 4-9) to be awarded the GCSE Modern Foreign Languages (MFL) in Spanish and French. Each component accounts for 25% of the total GCSE grade.

- Component - Listening                      - Written paper - 50 marks
- Component - Speaking                    - Non-exam assessment (Speaking Test) - 70 marks
- Component - Reading                     - Written paper - 50 marks
- Component - Writing                      - Written paper - 60 marks

## What can I do after the course? What careers will this course be useful for?

GCSE Modern Foreign Language provides a solid basis for the rigours of A Level study and beyond. Many universities and Sixth Form colleges require a good grade at GCSE in a Modern Foreign Language as a basic entry requirement.

A wide variety of careers are also accessible to those with a good knowledge of a foreign language, i.e. Law, Teaching, Engineering, Translating, Financial Services and Banking, Journalism, Medicine, Aviation.

## Who can I talk to for more information?

Mrs Shaunak-Hobbs (Team Leader: MFL) email: [k.shaunak@shenfield.essex.sch.uk](mailto:k.shaunak@shenfield.essex.sch.uk)

Mr Shaunak (Teacher: MFL) email: [a.shaunak@shenfield.essex.sch.uk](mailto:a.shaunak@shenfield.essex.sch.uk)

Miss Watson (Teacher: MFL) email: [m.watson@shenfield.essex.sch.uk](mailto:m.watson@shenfield.essex.sch.uk)

Miss Murphy (Teacher: MFL) email: [k.murphy@shenfield.essex.sch.uk](mailto:k.murphy@shenfield.essex.sch.uk)

## What websites can I check out?

<https://qualifications.pearson.com/en/qualifications/edexcel-gcses/spanish-2016.html>

<https://qualifications.pearson.com/en/qualifications/edexcel-gcses/french-2016.html>



# GCSE Geography

**Exam Board:** Edexcel B

**Equivalence:** 1 GCSE

## What will I learn?

The GCSE course has three components:

- Global Geographical Issues: The Hazardous Earth, Development Dynamics and Challenges of an Urbanising World.
- UK Geographical Issues: The UK's Evolving Physical and Human Landscape.
- People and Environmental Issues: Making Geographical Decisions.

We study these topics with a variety of examples from the local area, UK and other countries around the world. There are three exams at the end of Year 11, each is 90 minutes long.

## What will I be doing in lessons?

A variety of approaches are used to guide you through the course. Atlases, maps, videos, texts, the internet and other resources are used to illustrate and help you interpret the ideas and examples studied.

Class discussions and individual work help you to understand and communicate your thoughts and ideas. You will be expected, in addition to your written work in class, to produce reports, answer exam style questions, suggest plans for solving problems, complete extra reading and research, as well as to give your own views on issues.

## What fieldwork is expected?

**Fieldwork is an essential requirement of the course and *must* be undertaken by all students.** There are two days of fieldwork, as outlined by the exam board, that have to be completed. These will enable you to answer questions on Paper 2 which will be specifically about your experiences. As well as this, it will also increase your understanding of the concepts on this paper, and these two days have to be completed to meet the requirements set out by Edexcel.



## What do I need to know before I can start the course?

Geography is an exciting subject to study. It will give you an insight into the wider world and you will be able to explore your thoughts and opinions on a variety of issues. The ability to work to deadlines and be a member of a team will be valuable skills. An interest in current affairs will also help you in your GCSE Geography. Geography is an examined, written subject that has **no course work** component.

## What can I do after the course? What careers will this course be useful for?

Geography is regarded as a facilitating subject by the Russell Group and Oxbridge Universities, this means that Geography is highly regarded as good preparatory subject for any degree at the best universities in the UK.

Students who achieve a Geography GCSE will find that employers see it as a valuable qualification; it bridges the gap between the Arts and Sciences and is a good base for further study. It is also excellent preparation for many careers requiring practical problem solving skills, report writing, investigation, map-work, the ability to work with others, and an understanding of the environment around us.

## Who can I talk to for more information?

Mr Springett (Subject Leader: Geography) email: [h.springett@shenfield.essex.sch.uk](mailto:h.springett@shenfield.essex.sch.uk)

# GCSE History

**Exam Board:** Edexcel

**Equivalence:** 1 GCSE

## What will I learn?

"Most of us spend too much time on the last 24 hours and too little on the last 6,000 years"- Will Durant.

History matters. Our GCSE encompasses a wide range of themes, historical events and eras, so you can understand the past and its impact on the world around us.

You will sit three examinations at the end of Year 11. Paper 1 is a thematic study of Medicine in Britain c1250 to the present with a study of the British sector of the Western Front during the First World War: injuries, treatment and the trenches. Paper 2 has a period study of the American West, c 1835-c1895 and a British Depth Study on Henry VIII and his ministers, 1509-40. Paper 3 is a Modern Depth Study on Weimar and Nazi Germany 1918-39.

## What do I need to know before I can start the course?

You need have no specific prior knowledge before you start the History course, but some general historical knowledge is preferable. You do need to consider your commitment to the subject and the fact that the course heavily relies on reading and writing. However, if you have a passion for learning about the past, this should be the primary reason for choosing it as an option subject.

## What can I do after the course? What careers will this course be useful for?

History is a strong academic subject which provides a good basis for many careers and further study because of the skills it teaches. You could use your study of History to study A-levels in History, Sociology and Law.

The subject is highly thought of by employers and has links to careers in teaching, museum work, archaeology, law, journalism, TV and film research, the travel industry, librarianship, antiques or art gallery work. It is seen as an important subject, whose students are bright, articulate and have good employment prospects.

History is regarded as a facilitating subject by the Russell Group and Oxbridge Universities. This means that History is highly regarded as a good preparatory subject for any degree at the best universities in the UK.

## Who can I talk to for more information?

Mrs Howard (Team Leader: History) email: [s.howard@shenfield.essex.sch.uk](mailto:s.howard@shenfield.essex.sch.uk)

## What websites can I check out?

Edexcel: <https://qualifications.pearson.com/en/qualifications/edexcel-gcses/history-2016.html>

The Historical Association: <https://www.history.org.uk/>



# GCSE Music

**Exam Board:** OCR

**Equivalence:** 1 GCSE

This GCSE course is taught over two years and is designed for students who have an interest in all aspects of music. Over the two year course, you will study 5 different areas ranging from Baroque Music to Film and Computer Game Music, Traditional African to Calypso and Punjabi Music.

The course is broken down into three main strands.

1. Performance = 30%
2. Composition = 30%
3. Listening Exam at the end of year = 40%

## What do I need to know before I can start the course?

- You will be expected to perform a solo piece.
- Basic music theory is beneficial, but not essential.
- You will be expected to take part in extra-curricular clubs and concerts as part of the GCSE course.

## What can I do after the course? What careers will this course be useful for?

- Further study of Music at A level or BTEC Extended Certificate in Music (Performance).
- The qualification is relevant for jobs in the music industry, publishing, entertainment, teaching and many more. Music is an excellent addition to a CV, making it stand out and demonstrating to future employers that you are creative.
- The course encourages workplace skills such as communication, teamwork, confidence and organisation.

## Who can I talk to for more information?

Mr Carter (Team Leader: Music) email: [c.carter@shenfield.essex.sch.uk](mailto:c.carter@shenfield.essex.sch.uk)

Mr Sands (Deputy Headteacher) email: [j.sands@shenfield.essex.sch.uk](mailto:j.sands@shenfield.essex.sch.uk)



# GCSE Physical Education

**Exam Board:** Edexcel

**Equivalence:** 1 GCSE

## What will I learn?

### Fitness and Body Systems

- The functions of the skeletal, muscular, cardiovascular and respiratory systems.
- The short and long term effects of exercise.
- How to optimise training and prevent injury.
- The relationship between health and fitness.

### Health and Performance

- The consequences of a sedentary lifestyle and the importance of a healthy diet.
- The importance of mental preparation for performance.
- The impact of commercialisation of physical activity and sport.
- The engagement patterns of different social groups in physical activity and sport.

## What do I need to know before I can start the course?

- \*You will sit two exams at the end of Year 11, these equate to 60% of your overall grade.
- \*You should enjoy regular exercise and have a keen interest in sport.
- \*You should attend extra-curricular sports clubs and represent the school in regular fixtures.
- \*You will be expected to complete regular detailed homework.
- \*Your fitness will be tested on numerous occasions throughout the course.
- \*You will be required to participate in all sports during practical lessons.
- \*You will be expected to show a high level of commitment to both theory and practical PE lessons.

We shall cover a variety of activities each year. All students undertake games, swimming and athletic lessons to determine their strengths. The list of possible activities students can be assessed in is extensive. If you have a specialist sport that you would like to include that you compete in outside of school, speak to a member of the PE Department for clarification. The practical element is 30% of overall grade.

Students are asked to create a Personal Exercise Programme.  
This coursework task equates to 10% of the final grade.



## What can I do after the course? What careers will this course be useful for?

A-level PE, BTEC Sport, Fitness instructor, Personal trainer, PE teaching, Sports Coaching, Sports Development, Sports Psychology, Physiotherapy, any career in the leisure industry, to name a few.



### **Who can I talk to for more information?**

Mr Hall (Team Leader PE) email: [m.hall@shenfield.essex.sch.uk](mailto:m.hall@shenfield.essex.sch.uk)

Mrs G Cosentino (Course Leader PE) email: [g.cosentino@shenfield.essex.sch.uk](mailto:g.cosentino@shenfield.essex.sch.uk)

Mr Rigg (Assistant Headteacher) email: [j.rigg@shenfield.essex.sch.uk](mailto:j.rigg@shenfield.essex.sch.uk)

Miss J Matthews (GCSE PE Teacher) email: [j.matthews@shenfield.essex.sch.uk](mailto:j.matthews@shenfield.essex.sch.uk)

### **What websites can I check out?**

[www.teachpe.com](http://www.teachpe.com)

<https://qualifications.pearson.com/en/qualifications/edexcel-gcses/physical-education-2016.html>

[www.bbc.co.uk/schools/gcsebitesize/pe](http://www.bbc.co.uk/schools/gcsebitesize/pe)

**SPECIAL KIT REQUIREMENTS:** GCSE PE candidates are expected to wear Shenfield PE polo shirts and shorts. The PE tracksuit is also recommended since candidates are expected to be involved with extra-curricular sport and outdoor activities. Candidates will also be required to participate in swimming activities on the course where they will need a black swimsuit/trunks and a swimming hat.



# GCSE Sociology

**Exam Board:** WJEC Eduqas

**Equivalence:** 1 GCSE

## What will I learn?

The GCSE Sociology course is divided into two components.

### Component 1: Understanding Social Processes

- Key concepts and processes of cultural transmission
- Families
- Education
- Sociological research methods

### Component 2: Understanding Social Structures

- Applied methods of sociological enquiry
- Crime and deviance
- Social differentiation and stratification enquiry



## How will I be assessed?

Students will be assessed through two written exams:

Component 1: 1 hour 45 minutes, 100 marks - 50%

Component 2: 1 hour 45 minutes, 100 marks - 50%

## What can I do after the course? What careers will this course be useful for?

It was recently quoted in the news that employers are looking for students that have studied subjects such as Sociology. Sociology is relevant to a range of career paths including social work, policing, policy making and journalism.

Students who achieve a GCSE in Sociology will find that employers see it as a valuable qualification as it will give you an enhanced outlook on a range of social issues.



## What do I need to know before I can start the course?

No prior knowledge of Sociology is required before starting the course but it is expected that you will have an inquisitive outlook on everyday life. Those that thrive in Sociology do not take the everyday happenings of life for granted and look for the reasons as to why things happen in the way that they do.

## Who can I talk to for more information?

If you have any questions regarding GCSE Sociology then please do not hesitate to come and find Mr Bishop who will always be happy to help.

## What websites can I check out?

<https://www.eduqas.co.uk/qualifications/sociology/gcse/>  
<http://www.tutor2u.net/sociology/>





# Award in Enterprise and Marketing

**Exam Board:** OCR

**Equivalence:** 1 GCSE

## What will I learn?

### **Unit 1 (Weighting 40% - externally assessed written paper) Enterprise and Marketing Concepts:**

- Setting up and running a new business is an exciting challenge. To prepare you for this you will learn about the key factors to consider and activities that need to happen to operate a successful small start-up business. In this unit you will focus on how market research gives an entrepreneur an insight into the wants and needs of its customers, so that products can be developed to satisfy them. You will also learn about the main elements of the marketing mix, different types of ownership and key characteristics of successful entrepreneurs. You will also explore the sources of capital available to businesses and methods used to assess if a business is financially viable.

### **Unit 2 (Weighting 30% - internally assessed) Design a Business Proposal:**

- In this unit you will learn how to develop market research tools and use these to complete market research. This research will then be used to identify your target market, create a design mix and produce product design ideas. To help on your final design idea you will gain feedback and then assess the strengths and weaknesses of your initial ideas. To finalise this unit, you will complete financial calculations to decide whether your proposal is likely to make a profit and be financially viable.

### **Unit 3 (Weighting 30% - internally assessed) Market and Pitch a Business Proposal:**

- In this unit you will learn how to design a brand which will make your product stand out in the market, before creating a promotional campaign to get your brand noticed by customers. You will then create a presentation that you will pitch to an audience. After delivering your pitch you will reflect on your pitching skills, your brand, your promotional campaign and likely success of your product.

## What do I need to know before I can start the course?

No previous knowledge is required, but an interest in Business and good organisational skills would be an advantage.

## How will I be assessed?

For internally assessed units you will be given assignments set by OCR, that are completed within set time periods under supervised conditions in the classroom. These assessments may include written reports, presentations, interviews, brochures etc. Lessons before the assignments are set, will involve theory input and guidance on how to prepare for the supervised assessment. The assignments completed in the supervised assessments will then be marked by your teacher and then you may have **one** opportunity to resubmit your work for your final grade.

For the externally assessed unit you will complete an examination in the exam hall, under supervised conditions during a period timetabled by the exam board. The question paper is **70 marks** and **1 hour and 15 minutes** long. The exam paper has two parts:

Part A - includes 10 multiple choice questions

Part B –includes short/medium answer questions and one extended response question marked by levels of response.

The evidence produced is then assessed by an external examiner.

An overall grade for the qualification will be awarded to all students who successfully complete all units. The grades given for a OCR Cambridge national in Enterprise and Marketing are a Pass, Merit, Distinction or Distinction\*.



### **What can I do after the course? What careers will this course be useful for?**

Students gaining a OCR Cambridge National in Enterprise and Marketing will have access to a range of career and further education opportunities. You will use a variety of skills throughout the course, including researching, problem solving, decision making, innovation, project management, team working and communication.

Students who prefer this way of working will also be excellently placed for further study under the BTEC scheme – most obviously the **BTEC Extended Diploma in Business** (equivalent to three A Levels) in the Sixth Form.

An OCR Cambridge National in Enterprise and Marketing is ideal for students wanting to develop applied knowledge and practical skills in setting up and running a successful business enterprise.

### **Who can I talk to for more information?**

Miss Weeden (BTEC Programme Leader) email: [j.weeden@shenfield.essex.sch.uk](mailto:j.weeden@shenfield.essex.sch.uk)

### **What websites can I check out?**

<https://ocr.org.uk/qualifications/cambridge-nationals/enterprise-and-marketing-level-1-2-j837/>





# BTEC Level 2 Tech Award in Health & Social Care

**Exam Board:** Edexcel

**Equivalence:** 1 GCSE

## What will I learn?

The Award gives you the opportunity to develop sector-specific knowledge and skills, apply your learning to real-life scenarios and learn about the Care Values. There are three Components:

### Component 1:

- Understanding human growth and development across life stages and the factors that affect it
- Investigating how individuals deal with life events.

### Component 2:

- Understanding the different types of health and social care services and barriers to accessing them
- Understanding the care values and how they are used in Health and Social Care

### Component 3:

- Demonstrating knowledge and understanding of factors that affect health and wellbeing
- Designing a person-centred health and wellbeing improvement plan
- Demonstrating knowledge and understanding of how to overcome obstacles relating to health and wellbeing improvement plans

## How will I be assessed?

Component 1 – Internal Assessments (Assignments set by exam board) – Externally Moderated

Component 2 – Internal Assessments (Assignments set by exam board) – Externally Moderated

Component 3 – External Assessment (2 hour exam)

## What do I need to know before I can start the course?

There is no work experience requirement for this course.

## What can I do after this course? What careers will this course be useful for?

This course can be used in the same way as your GCSEs when applying to Sixth Forms and Colleges as it is equivalent to one GCSE. It can also lead onto the Level 3 BTEC National Extended Diploma in Health and Social Care at Shenfield High School Sixth Form.

## Who can I talk to for more information?

Mrs Dyke (Course Leader) email: [c.dyke@shenfield.essex.sch.uk](mailto:c.dyke@shenfield.essex.sch.uk)

# Level 2 Award in Engineering

**Exam Board:** Pending

**Equivalence:** 1 GCSE

## What is Engineering all about?

Engineering is the application of mathematics, empirical evidence and scientific, economic, social, and practical knowledge in order to invent, innovate, design, build, maintain, research, and improve structures, machines, tools, systems, components, materials, processes and organizations.

## What will I learn?

The course provides opportunities for you to develop an understanding of the important role that engineers play in our fast changing world. You will have the opportunity to understand the properties and uses of a variety of engineering materials such as metals, woods and polymers. Analysing existing engineered products by looking at their form, function, the manufacturing environment, manufacturing processes and their environmental impact and then proposing design solutions to meet the requirements.

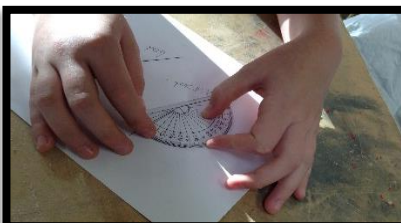
This subject will enable you to develop your independent personal learning and thinking skills. These are the types of skills sought by employers in a variety of industries. Your understanding and knowledge of the importance of health and safety, relating to legal and industrial requirements within the working environment, will stand you in good stead if you chose to work within an engineering sector.

Assessments are done through an interactive portfolio consisting of written reports, presentations and the fabrication of engineering products. You will study several units of work, each relating to a set brief and scenario with either single or multiple tasks attached. Some of the units are internally assessed and moderated. One of the units consists of an externally marked assessment.

## What do I need to know before I can start the course?

Engineering by its very nature is a practical subject and has practical work associated with it. This is complimented by having direct links to the STEMM activities and competitions that the school enters, such as the Rocket building competition and the Soap Box building competition. Further information on STEMM activities can be found on our website or by asking a member of the science and engineering staff.

You will need to have an enquiring mind about how products are manufactured, where the raw materials come from, why those materials are chosen and how they are developed into functional products. To be successful you will need the ability to be organised, work independently and creatively, work within a time scale, work as a team, and make independent decisions. To achieve a Pass, Merit or Distinction grade in Engineering you will need to have achieved a good grade in Mathematics and Science. The work you have done at KS3 in Science and Mathematics should serve you well in this respect.



## What can I do after the course? What careers will this course be useful for?

Completion of the Engineering course could lead into careers such as:

Aerospace Engineering	Agricultural and Biosystems	Bioengineering and Biomedical
Electrical Engineering	Environmental Engineering	Industrial Engineering
Manufacturing Engineering	Materials Science	Mechanical Engineering
Nuclear Engineering	Petroleum Engineering	Automotive Engineer
Computing and IT Engineer	Defence Engineer	Design Engineer
Infrastructure Engineer	Plant Engineer	Quality Engineer
Telecoms Engineer	Digital Engineer	Transport Engineer
Systems Engineer	Surveying Engineer	Rail Engineer

The possibilities are endless as Engineering has a large amount of transferable skills in industry and as a career choice.

## Who can I talk to for more information?

Mr Hall (Lead teacher: Engineering) email: [ma.hall@shenfield.essexs.ch.uk](mailto:ma.hall@shenfield.essexs.ch.uk)

## What websites would give me more information?

Any website on the careers mentioned above will give you guidance on a career path you could follow.

<https://www.engineerjobs.co.uk/careers-advice/where-to-start/the-different-types-of-engineering-sectors>

<https://www.goconstruct.org/>



## Recent news headlines state that:

### UK needs over one million new engineers and technicians, says Royal Academy of Engineering

With women accounting for less than 10 per cent of the sector's workforce, Katie Grant reports on efforts to win over schoolgirls.

### UK faces shortage of engineers

Despite the difficulties of Brexit and pandemic-related economic uncertainty, engineering and manufacturing remains central to the British economy, generating over twenty percent of the UK's GDP. However, in recent years employers have found it increasingly difficult to fill engineering vacancies, and according to a recent Recruitment Employment Confederation (REC) Jobs Outlook report the situation is deteriorating.

## Level 2 Award in Music Technology

**Exam Board:** Pending

**Equivalence:** 1 GCSE

### Who is the course for?

The course provides you with the opportunity to explore all forms of Music Technology including sequencing, recording, manipulating sound and mixing. The course has been designed to incorporate a broad range of activities focusing on:

- Giving you a nationally recognised qualification that can be used to enter employment or as a stepping stone to further learning within Higher Education.
- Giving you the opportunity to develop a range of skills, techniques and attitudes that are essential for successful performance in working life.

### What will I learn?

- The developing place of Music Technology within the ever growing Music Industry.
- How musical styles have been influenced through Music Technology.
- Use sound creation in different forms of media such as TV, Radio and Video Games.
- How to produce musical recordings from microphone to mixing down.
- How to create your own Music using music software.

### What do I need to know before I can start the course?

You should have a genuine interest in sound production and a passion for music. The course requires some musical understanding but this is not essential. You **do not** need to be able to play an instrument.

### How will I be assessed?

The majority of the course is coursework which are assessed through creation of portfolios. This will include presentations, audio recordings, screen-shots, live assessment results and project work. All pieces of work will be awarded a Pass, Merit or Distinction or in some cases a Distinction\*. At least one unit will be set and externally assessed through a short exam and/or a creation of a portfolio.

### What can I do after the course? What careers will this course be useful for?

At the end of the course you may choose to study Music Technology at college or a sixth form. Alternatively, you could seek employment at a record label, theatre, sound studio or as a technician. The course is designed to improve workplace skills such as communication, planning, meeting deadlines, group working, confidence and organisation.

### Who can I talk to for more information?

Mr Carter (Team Leader for Music) email: [c.carter@shenfield.essex.sch.uk](mailto:c.carter@shenfield.essex.sch.uk)

Mr Sands (Deputy Headteacher) email: [j.sands@shenfield.essex.sch.uk](mailto:j.sands@shenfield.essex.sch.uk)



# Vocational Level 2 Award in Performing Arts

**Exam Board:** WJEC

**Equivalence:** 1 GCSE

## What will I learn?

During this course you will learn a range of skills and techniques that you can transfer to your working life, no matter what career you choose, including confidence, teamwork and commitment. Students are given the opportunity to plan and create various pieces of work by responding to industry commissions. They will work to a brief commissioned by an arts organisation to plan a variety of performances. This course will aid students in understanding how paid artists secure paid commission jobs as well as gaining a good understanding of the business and management sector of the performing arts industry.

## What do I need to know before I can start the course?

This course is highly practical and fun but candidates must also be highly reliable and committed as it provides a real-world approach. You must be able to meet deadlines and be responsible for self-managing your workload. You will need an obvious talent and experience in acting as this is the main focus of the course and the focus of the assessment criteria. You must be able to work both as an individual and as part of a team.

Though this is a practically focused course, there is an element of written work/controlled assessment which requires you to document your knowledge and understanding of each unit through written logs and presentations. There is one externally assessed unit for the entire course.

### 3 units covered:

- Unit 1: Performing Drama (internal)
- Unit 2: Creating Drama (internal)
- Unit 3: Performing Arts in Practice (external)

## How will I be assessed?

The assessment will be heavily based on practical work. Each unit has a written element. There is 1 unit which is externally assessed and marked by external examiners.

## What can I do after the course? What careers will this course be useful for?

- You may decide to continue your studies in the Sixth Form by taking A Level Drama and Theatre Studies
- You may simply apply the transferable life skills you have developed in any career
- You may want to pursue a career in the Performing Arts Industry
- You could also use the vocational qualification as entrance into a Drama School.

## Who can I talk to for more information?

Ms Sherwood (Subject Leader: Performing Arts Courses) email: [e.sherwood@shenfield.essex.sch.uk](mailto:e.sherwood@shenfield.essex.sch.uk)

## What websites can I check out?

[https://www.wjec.co.uk/qualifications/level-1-2-vocational-award-in-performing-arts/#tab\\_overview](https://www.wjec.co.uk/qualifications/level-1-2-vocational-award-in-performing-arts/#tab_overview)







## Looking ahead to the Sixth Form

This page shows A-level and BTEC courses currently offered at Shenfield High School Sixth Form. It also includes the subject specific criteria students will need to be able to access that course this year.

**Please note subjects offered and entry criteria are reviewed every year.**

<b>Fine Art</b>	GCSE grade 5 in Art.
<b>Biology</b>	Any GCSE combined science grade 7. GCSE Biology, if studied, grade 7. GCSE Maths grade 6.
<b>Business Studies</b>	GCSE grade 5 in English and Mathematics. GCSE Business Studies, if studied, grade 5 or a Merit in Level 2 BTEC.
<b>Chemistry</b>	Any GCSE combined science grade 7. GCSE Chemistry, if studied, grade 7. GCSE Maths grade 6.
<b>Drama and Theatre Studies</b>	GCSE grade 6 in Drama and a grade 6 in English. Merit or above in BTEC Performing Arts (dependent on interview with Head of Department).
<b>Economics</b>	GCSE grade 6 in English Language or Literature and 5 in Mathematics.
<b>English Language</b>	GCSE grade 6 in English Language or English Literature.
<b>English Literature</b>	GCSE grade 6 in English Language or English Literature.
<b>Film Studies</b>	GCSE grade 5 in English Language and Literature.
<b>Geography</b>	GCSE grade 6 in Geography. Grade 6 in English and Maths.
<b>History</b>	GCSE grade 6 in History and a grade 5 in GCSE English.
<b>Law</b>	GCSE grade 6 in English and a grade 6 in another written-based subject.
<b>Mathematics</b>	GCSE grade 7 in Mathematics.
<b>Media Studies</b>	GCSE grade 5 in English Language and Literature.
<b>Music</b>	GCSE grade 5 in Music. Level 2 BTEC students will be asked to attend an audition.
<b>Philosophy</b>	Grade 6 in GCSE English and a grade 6 in another predominantly written based subject.
<b>Physical Education</b>	A grade 6 in GCSE Physical Education and a grade 6 in any GCSE Science. Students who did not do GCSE PE will be considered if they achieved a grade 6 in science. Regular (at least weekly) sports participation is essential.
<b>Physics</b>	Any GCSE combined science grade 7. GCSE Physics, if studied, grade 7. GCSE Maths grade 7 and ideally be looking to follow the A-Level Mathematics course.
<b>Psychology</b>	GCSE grade 6 in a Science subject (preferably Biology), grade 6 in English and grade 6 in Mathematics.
<b>Sociology</b>	A grade 6 at GCSE English Language and a grade 6 in another predominately written-based subject (English Literature, History, Geography, Religious Education etc). If the student has taken Sociology at GCSE they will need a



	minimum of a grade 6 (this can also count as their other predominately written-based subject).
<b>Spanish</b>	GCSE grade 6 in Spanish and GCSE grade 5 in English.

**BTEC Extended Diploma in Business** – Six GCSEs at grade 4. If you have previously studied Business Studies, you will need to have obtained a grade 4 in GCSE Business or a Merit at Level 2 BTEC Business. At least a grade 4 in English and Mathematics at GCSE is also necessary.

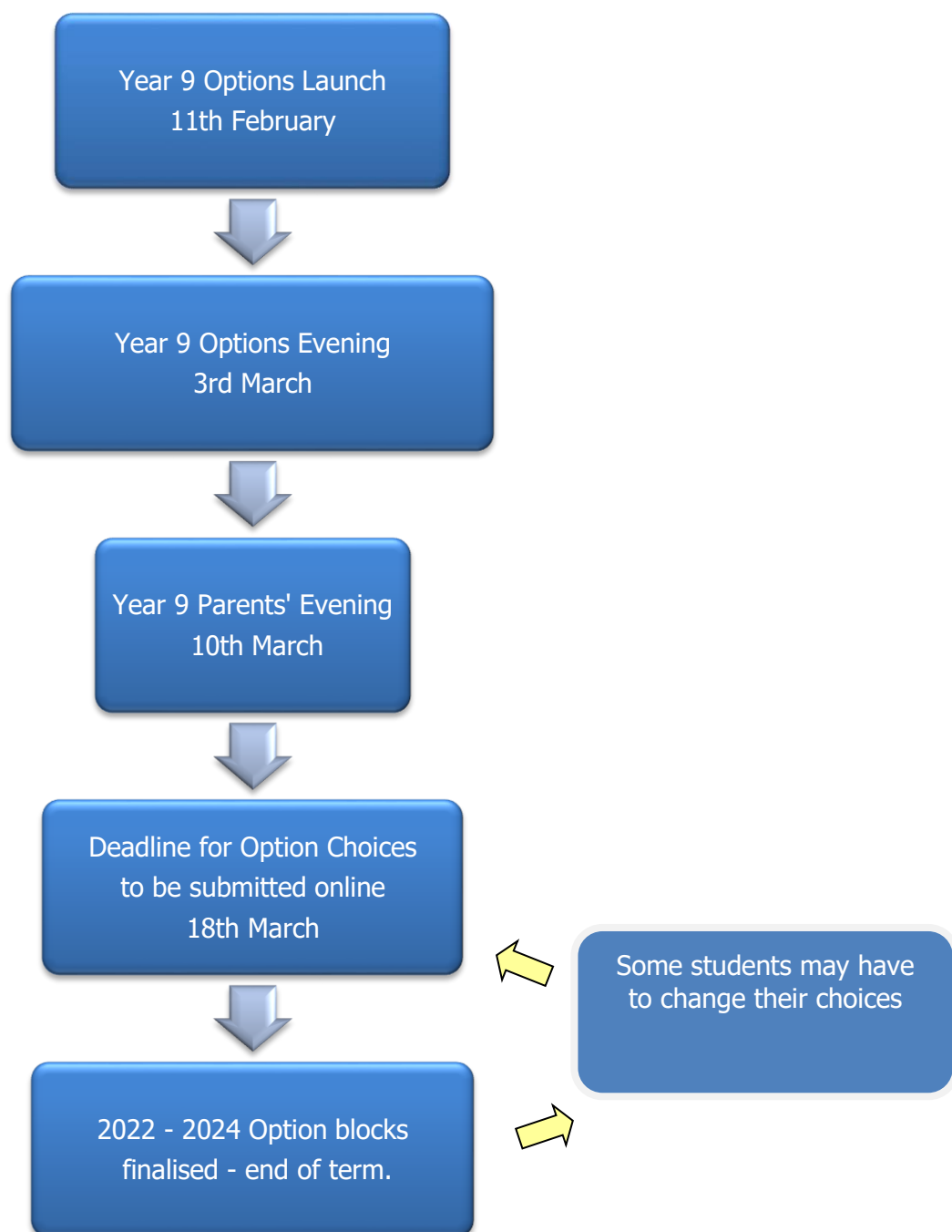
**BTEC Extended Diploma in Health and Social Care** – Two grade 4s in Science and a grade 4 in English. A Level 2 Merit in BTEC Health and Social Care or a grade 5 in GCSE Health and Social Care.

**BTEC Extended Diploma in Sport and Exercise Science** – Six GCSEs at grade 4 to include a grade 5 in GCSE Physical Education or Level 2 BTEC in sport if taken and a grade 5 in Science and a grade 5 English Language or Literature. A keen interest in sport is a necessity.

**BTEC Extended Certificate in Music (Performance)** - GCSE Music at grade 5 or above. We will consider any application regardless of formal qualifications but an audition will be required before acceptance.

**BTEC Extended Certificate in Sport** - Grade 5 in Physical Education at GCSE or Level 2 BTEC in Sport. A keen interest in sport is a necessity.

## Timeline of the Options Process







## Check your options (DfE guidance)

The DfE policy is that school performance will be measured on the average GCSE points score for students across 8 subjects:

- The **two** core subjects of English and Maths.
- **At least one** subject from Sciences, Computer Science, Geography, History and Modern Foreign Languages.
- A further **three** subjects and **two** reserves from:

### GCSEs:

- Fine Art
- Business Studies\*
- Computer Science
- Drama
- Film Studies\*
- Food Preparation and Nutrition\*
- French
- Geography
- History
- Music
- Physical Education
- Sociology\*
- Spanish
- Triple Science

### BTECs:

- Health and Social Care\*

### Vocational Award:

- Performing Arts
- Enterprise and Marketing\*
- Engineering\*
- Music Technology

\*For subjects that are not currently studied at KS3\* taster sessions will be offered between 28<sup>th</sup> February 2022 and 17<sup>th</sup> March 2022. To show your commitment to this subject you will need to attend the correct subject taster session.



## Submitting your KS4 Option choices

To submit your Option subject choices, you need to access the Options Form within EduLink.

To access EduLink select [www.edulinkone.com](http://www.edulinkone.com) on your internet browser, or if at home, you can open the App on your phone or tablet.

Enter the word 'shenfield' as the school ID. In the Username box enter your school computer login (a 4 digit number), and in the Password box enter your school computer password. This is the same login and password that you use to access the school computers and your school emails.

This will take you to your EduLink homepage, where you need to click the green 'Forms' icon from the EduLink wheel.

Click on 'Key Stage 4 Options 2022' and this will open your Options selection form as follows:

Key Stage 4 Options 2022

Please use this form to submit your Key Stage 4 Option subject choices.

To assist with your decision making, please click [here](#) to access the KS4 Options Booklet. In addition, please attend the KS4 Options Evening on Thursday 3rd March.

You need to select the following:

- **ONE** subject from the DIRECTED CHOICE list
- **THREE** subjects from the OPEN CHOICE list - these **MUST** be listed in preference order
- **TWO** subjects from the RESERVE CHOICE list - these will be used if your Main choices are unavailable

Please note:  
*You cannot select the same subject more than once.*  
*The order of your subjects is very important as this will be used when subjects are at capacity.*  
*The following subjects cannot be studied together, but can be chosen as a Main and a Reserve:*  
*Business GCSE / Enterprise & Marketing vocational course*  
*Drama GCSE / Performing Arts vocational course*  
*Music GCSE / Music Technology vocational course*

This form will only submit once you have selected **all** of your Option choices, you cannot save it part way through. Once you have submitted this form, you **WILL NOT** be able to make any changes.

To make changes to your Option choices once you have submitted this form, please visit the Data Office (in South Hall), or email Mrs Penn ([g.penn@shenfield.essex.sch.uk](mailto:g.penn@shenfield.essex.sch.uk)).

This form must be submitted by 3pm on Friday 18th March.

DIRECTED CHOICE - Choose ONE of the following subjects: \*

Select

OPEN CHOICE 1 - Choose your most preferred subject: \*

Select

OPEN CHOICE 2 - Choose your second most preferred subject: \*

Select

OPEN CHOICE 3 - Choose your third most preferred subject: \*

Select

RESERVE CHOICE 1 - Choose your first reserve subject - this may be used if your Main choices are unavailable: \*

Select

RESERVE CHOICE 2 - Choose your second reserve subject - this may be used if your Main choices are unavailable: \*

Select

CANCEL
SUBMIT

You can only submit this form once **ALL** of your Option selections have been made, you cannot save it part way through. Once the form is submitted, you **WILL NOT** be able to make changes to your selections.

Please remember:

- You need to select ONE Directed subject, THREE Open subjects and TWO Reserved subjects
- You cannot select the same subject more than once
- The order of your subjects is very important as this will be used when subjects are at capacity
- The following subjects cannot be studied together, but can be chosen as a Main and a Reserve  
*Business GCSE / Enterprise & Marketing Vocational Award*  
*Drama GCSE / Performing Arts Vocational Award*  
*Music GCSE / Music Technology Vocational Award*

If you experience any issues logging into EduLink, please contact your form tutor.

If you wish to make changes to your Option subjects after you have submitted your form, please visit the Data Office (in South Hall) or email Mrs Penn ([g.penn@shenfield.essex.sch.uk](mailto:g.penn@shenfield.essex.sch.uk)).

**The form must be submitted by 3pm on Friday 18<sup>th</sup> March.**



**Student Name:** ..... **Form:** .....

## KEY STAGE 4 OPTIONS CHECKLIST 2022

Please tick your option subjects on the table below to ensure that they meet the government's expectation for a broad, balanced curriculum. Some ticks have been completed for you because some criteria are met by the core subjects at Key Stage 4. Submit this options choices form **by Friday 18<sup>th</sup> March 2022.**

Criteria	Subjects
<b>These subjects are compulsory</b>	<div>English Language <input checked="" type="checkbox"/> Maths <input checked="" type="checkbox"/></div> <div>English Literature <input checked="" type="checkbox"/> Social Sciences (non-examinable) <input checked="" type="checkbox"/></div> <div>Combined Science (2 GCSEs) <input checked="" type="checkbox"/> PE (non-examinable) <input checked="" type="checkbox"/></div>
<b>Choose 1 by ticking one of the boxes</b>	<div>Geography <input type="checkbox"/> French <input type="checkbox"/></div> <div>History <input type="checkbox"/> Spanish <input type="checkbox"/></div> <div>Triple Sciences (3 GCSEs) <input type="checkbox"/> Computer Science <input type="checkbox"/></div>
<p><b>Choose 3 main and 2 reserves.</b></p> <p><b>Indicate your preferred subject choices by numbering choices 1 to 5. Choices 4 and 5 will be reserve choices and will be used if your preferred options are unavailable. The ranking of subjects is very important and will be used when subjects are at capacity.</b></p> <p><i>Please note the following subjects cannot be studied together but can be put as a main <u>or</u> reserve:</i>  <b>Business GCSE/Enterprise</b>  <b>Drama GCSE/Performing Arts</b>  <b>Music GCSE/Music Technology</b></p>	<p><b>GCSEs:</b></p> <div>Fine Art <input type="checkbox"/> Sociology <input type="checkbox"/></div> <div>Business <input type="checkbox"/> Spanish <input type="checkbox"/></div> <div>Computer Science <input type="checkbox"/> Triple Science <input type="checkbox"/></div> <div>Drama <input type="checkbox"/> <b>BTECs:</b></div> <div>Film Studies <input type="checkbox"/> Health and Social Care <input type="checkbox"/></div> <div>Food Technology <input type="checkbox"/> <b>Vocational Awards:</b></div> <div>French <input type="checkbox"/> Enterprise <input type="checkbox"/></div> <div>Geography <input type="checkbox"/> Engineering <input type="checkbox"/></div> <div>History <input type="checkbox"/> Music Tech <input type="checkbox"/></div> <div>Music <input type="checkbox"/> Performing Arts <input type="checkbox"/></div> <div>PE <input type="checkbox"/></div>



## SHENFIELD HIGH SCHOOL

Shenfield High School  
Alexander Lane  
Shenfield  
Essex  
CM15 8RY

T: 01277 219131  
F: 01277 226422  
E: [shs@shenfield.essex.sch.uk](mailto:shs@shenfield.essex.sch.uk)