

SHENFIELD HIGH SCHOOL

KEY  
STAGE  
4  
CURRICULUM

2024 - 2026



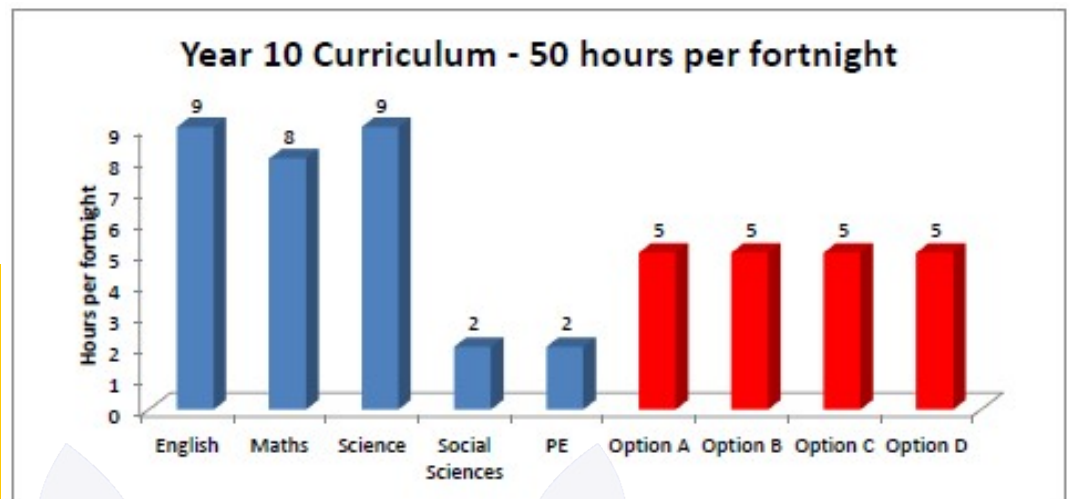


# The Key Stage 4 Curriculum

# KEY STAGE 4 CURRICULUM

In Year 10 and Year 11, students have an element of choice which allows them to personalise their curriculum. There are, however, a number of subjects that are compulsory for every student. These are the core subjects that make up approximately 60% of the timetable for each student. The remainder of each student's timetable is composed of a further 4 subjects that students can select from an approved list.

The Year 10 curriculum is outlined below. The school follows a two-week timetable cycle with 50 lessons every fortnight:



### Core subjects

The table below gives summary information about the core subjects at Key Stage 4 and the allocation of teaching time in hours per fortnight:

Subject	Hours in Yr 10	Summary information
English	9	Most students will study for 2 GCSEs in English Language and English Literature.
Maths	8	All students will study for a GCSE in Maths
Science	9	All students will study Biology, Chemistry and Physics, leading to 3, or in some case 2 GCSEs .
PE	2	All students take part in Physical Education as a core subject
Social Sciences	2	All students study Social Sciences as a core subject

## Option subjects

Students will choose four subjects from this list:

## GCSE subjects

Fine Art	Business Studies	Computer Science
Drama	Film Studies	Food Preparation and Nutrition
French	Geography	History
Music	Physical Education	Sociology
Spanish	Statistics and Further Maths	

## Vocational subjects

Enterprise and Marketing	Health and Social Care	Engineering
Music Technology	Performing Arts:Dance Pathway	

The school will offer advice, guidance and support to each student to ensure that appropriate choices are made. Some subjects have eligibility criteria based on ability and/or aptitude.

PLEASE NOTE THAT SUBJECTS WILL RUN ONLY IF THE NUMBER OF STUDENTS APPLYING MAKES THE COURSE VIABLE.

### Enhanced Support

A small number of students will receive additional support to help them make progress with the core subjects and study skills required by the other subjects being studied. These students will receive enhanced support instead of one option subject.

### Department for Education (DfE) Guidelines

School Performance is measured on the average GCSE points score for students across a range of 8 subjects, as follows:

- English and Maths.
- At least 3 subjects from Sciences, Computer Science, Geography, History and Modern Foreign Languages.
- 3 additional approved subject choices.

Selecting from these groups of subjects ensures an appropriately balanced curriculum according to current government guidelines.

In addition, the English Baccalaureate (EBacc) is the term given to the following set of subjects at GCSE: English Language and Literature, Maths, the Sciences, Geography or History and a Modern Foreign Language. It is the government's ambition that 75% of pupils nationally will study the EBacc combination of subjects.

Students interested in pursuing a university education should read the Russell Group's "Informed Choices" publication to ensure that the GCSEs you choose facilitate the choices you want to make post-16 and beyond.

[www.informedchoices.ac.uk](http://www.informedchoices.ac.uk)

“Commit yourself to lifelong learning.  
The most valuable asset you'll ever have is  
your mind and what you put into it.”

Albert Einstein



# The Key Stage 4 Curriculum

# CONTENTS

<b>The Key Stage 4 Curriculum</b>	<b>2/3</b>
<b>Contents</b>	<b>4</b>
<b>KS4 Core Subjects</b>	
English Language	6/7
English Literature	8/9
Mathematics	10/11
Science	12/13
Careers Education and Guidance including Work Experience	14/15
Physical Education	16
Social Sciences	17
<b>KS4 Options</b>	
Fine Art	20/21
Business Studies	22/23
Computer Science	24/25
Drama	26/27
Film Studies	28/29
Food Preparation and Nutrition	30/31
French and Spanish	32/33
Geography	34/35
History	36/37
Music	38/39
Physical Education	40/41
Sociology	42/43
Statistics and Further Maths	44/45
Vocational Level 2 Award in Enterprise and Marketing	46/47
Vocational Level 2 Award in Health and Social Care	48/49
Vocational Level 2 Award in Engineering	50/51
Vocational Level 2 Award in Music Technology	52/53
Vocational Level 2 Award in Performing Arts: Dance Pathway	54/55
Looking ahead to the Sixth Form	56/57
Timeline of the Option Process	58
Check Your Options (DfE Guidance)	59
Submitting Your KS4 Option Choices	60/61
Options Checklist Form	62





## AQA GCSE English Language

# ENGLISH LANGUAGE

### What will I learn in GCSE English Language?

Students studying English Language will also study English Literature which counts as a separate GCSE. It is important to remember that the course is 100% examined. The GCSE English Language course serves as the principal method of teaching and testing Key Stage 4 of the National Curriculum for English. Your work will develop your skills in the following areas:

#### Speaking and Listening

You will learn to be an intelligent listener able to respond thoughtfully to other people's words and feelings. You will learn to discuss, converse and persuade with greater confidence, adapting your words to a variety of purposes and audiences. You will achieve either a distinction, merit or pass grade in speaking and listening.

#### Reading

You will learn to cope with the demands of reading a wide range of materials, including both fiction and non-fiction, from various periods of time.

#### Writing

You will develop your ability to write personally and imaginatively and to write in a variety of forms and styles. Of course, attention to correct spelling and an understanding of punctuation and grammar are essential.

### What do I need to know before I can start the course?

Keep working on basic skills such as spelling and punctuation. Do as much reading as possible from as many different sources, from books to newspapers. Develop a broader understanding of the wider world and explore the main events and issues that are happening today.

### How will I be examined?

Students will sit two exams.

Paper 1: Explorations in creative reading and writing

Paper 2: Writers' viewpoints and perspectives

Both papers are worth 80 marks and are 1 hour and 45 minutes long.

### Who can I talk to for more information?

Mrs Whitfield (Team Lead English) email: [s.whitfield@shenfield.essex.sch.uk](mailto:s.whitfield@shenfield.essex.sch.uk)  
Any teacher in the English Department.



### What can I do after the course? What careers will this course be useful for?

As you probably already realise, the importance of your GCSE English Language qualification to whatever future plans you have regarding higher or further education or employment cannot be emphasised strongly enough. All careers are dependent upon acquiring and mastering communication skills.

You must prove yourself competent in English Language, if you are to contemplate any further education and, of course, to function effectively as an adult in any working or leisure environment.

If you do well in your GCSEs you may wish to take up English Language or English Literature, or both, at A level. These subjects are highly popular with students in the Sixth Form at Shenfield High School. Securing a good grade in English Language or English Literature is essential if you wish to study A Levels in the future.

**JOURNALIST, COPYWRITER, TEACHER,  
PARALEGAL, BLOGGER, MUSEUM CURATOR,  
SONGWRITER, FREELANCE WRITER, CONTENT  
CREATOR, EDITOR, WEB EDITOR, PUBLISHER,  
AUTHOR, SCREEN WRITER, DRAMATIST, POET**

### What website can I check out?

[www.aqa.org.uk/subjects/english/gcse/english-language-8700](http://www.aqa.org.uk/subjects/english/gcse/english-language-8700)

“ The English language is nobody's special property. It is the property of the imagination: it is the property of the language itself. ”

Derek Walcott



# AQA GCSE English Literature

## ENGLISH LITERATURE

### What will I learn in GCSE English Literature?

The main aim of the Literature course is to develop your ability to read, understand and respond to all types of literary texts. You will, therefore, study a range of literature covering prose, poetry and drama. You will study a mixture of modern literature and some works written before the 20th Century, including Shakespeare. The course is 100% examined.

The syllabus offers a wide range of texts from which to choose, and the specific choice of texts will vary from one class to another, depending on your ability and interests. It is always our aim, as teachers, to 'stretch' you so that you can achieve your full potential.

### What do I need to know before I can start the course?

Keep working on basic skills such as spelling and punctuation. Do as much reading as possible.

### How will I be examined?

Students will sit two exams.

Paper 1: Shakespeare and the 19th-Century novel

Paper 2: Modern Drama and Poetry.

Paper 1 has 64 marks available and is 1 hour and 45 minutes long. Paper 2 has 96 marks available and is 2 hours and 15 minutes long.

### Who can I talk to for more information?

Mrs Whitfield (Team Leader) email: [s.whitfield@shenfield.essex.sch.uk](mailto:s.whitfield@shenfield.essex.sch.uk)

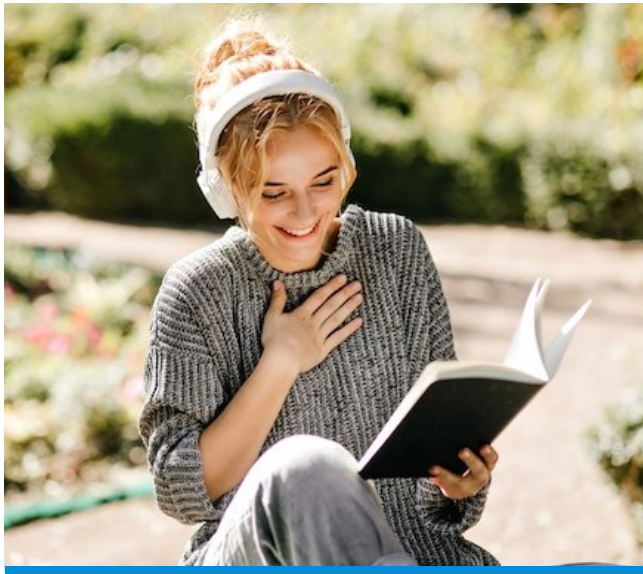
Any teacher in the English Department.

### What can I do after the course? What careers will this course be useful for?

GCSE Literature is a formal qualification which is a distinctly separate award from GCSE English Language. It is therefore a valuable asset as a qualification in its own right and of equal weight to any of your other GCSE subjects.

If you wish to pursue your studies of English to A-level in the Sixth Form, then a high level of achievement in both English Language and Literature will be required.





*'People who study English Literature develop a host of transferrable skills that employers are looking for. By examining numerous texts in detail, you will develop reading skills such as the ability to process information and facts directly stated in the text and understand their underlying meaning, critical reading and evaluation of a writer's choice of vocabulary, grammatical and structural features.... Your essay writing will enable you to carry out research, develop persuasive arguments and write in a coherent, articulate way. Your vocabulary and use of the English language will vastly improve. Allowing you to effectively communicate your understanding, opinions and ideas that you have gained from your in-depth analysis and critical thinking. All of which are important to employers.*

*Studying GCSE English Literature nurtures a passion for reading and writing while laying a solid foundation for further study and the workplace. While you can take your GCSE qualification into further literary studies, having a good grade in GCSE English Literature can help you study many other subjects. This is because English as a whole is a core subject that provides solid skills that are applicable in many areas of study.'*

[www.learndirect.com](http://www.learndirect.com)

**WRITER, POET, JOURNALIST, EDITOR, LAWYER,  
TEACHER, DIGITAL COPYWRITER, PR MANAGER,  
LEXICOGRAPHER, ADVERTISING, MARKETING,  
MEDIA RESEARCHER, CONTENT CREATOR,  
SOCIAL MEDIA MANAGER, PUBLISHER, AUTHOR**

What website can I check out?

[www.aqa.org.uk/subjects/english/gcse/english-literature-8702](http://www.aqa.org.uk/subjects/english/gcse/english-literature-8702)

**“I read so many books when I was a kid that I didn't even know were shaping me up.”**

Stormzy



# EDEXCEL GCSE Mathematics

# MATHEMATICS

## What will I learn in GCSE Mathematics?

GCSE Mathematics will build upon what has been studied in Years 7, 8 and 9. The course extends this knowledge by further developing mathematical skills as well as introducing new topics. Problem solving in Mathematics is now an integral part of the course and involves using the mathematical skills learnt and applying them to real life applications and unfamiliar problems.

## What do I need to know before I can start the course?

Higher tier GCSE entries are usually made for students who are working above a grade 5. Foundation entries will be made for those working up to a grade 5

## How will I be examined?

All students will take a linear course with three examination papers at the end of Year 11. One of these is a non-calculator paper and the others are calculator.

## What website can I check out?

[Maths GCSE | Edexcel GCSE Mathematics \(2015\) | Pearson qualifications](#)

[Sparx Maths](#)

sparxmaths.uk is a useful online resource covering all GCSE Mathematics topics.



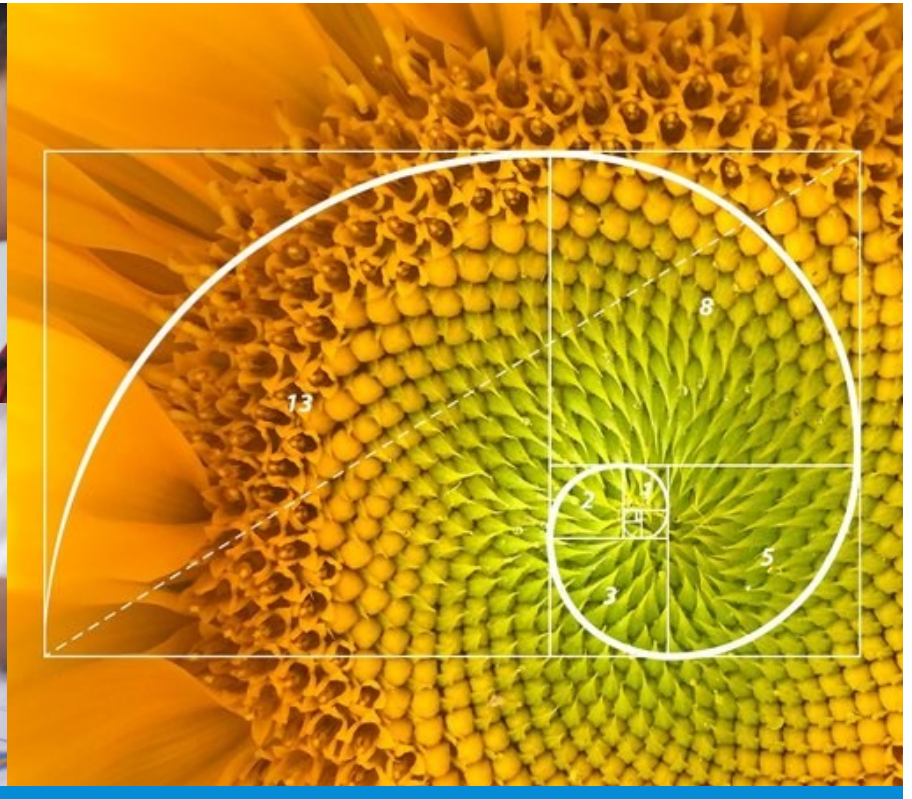
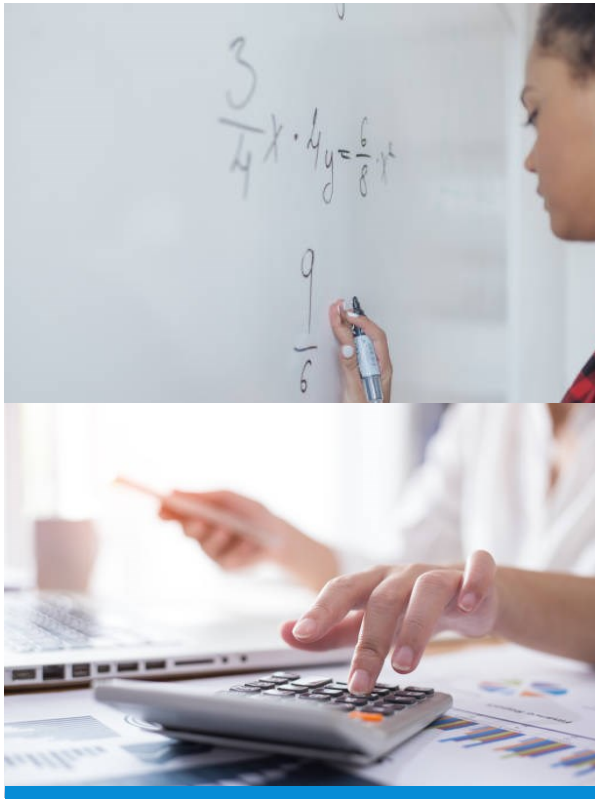
## Who can I talk to for more information?

Mr Dennehy (Team Leader) email: [n.dennehy@shenfield.essex.sch.uk](mailto:n.dennehy@shenfield.essex.sch.uk)

Mr Russell (Course Leader for Key Stage 4) email:

[p.russell@shenfield.essex.sch.uk](mailto:p.russell@shenfield.essex.sch.uk)

Or any member of the Mathematics Department.



### What can I do after the course? What careers will this course be useful for?

A good grade at Mathematics GCSE is required to study any subject at University, usually at least a grade 4 or 5. It is also the passport to many jobs, Sixth Form or Further Education courses. All students are strongly advised to strive for the best grade possible.

*'Mathematics is a universal language that helps us to understand the world, and it is a core part of the curriculum. As well as teaching about numbers, shapes, statistics and patterns, it provides important tools for work in areas such as physics, architecture, medicine and business. It helps learners to develop logical and methodical thinking, to focus and to solve a wide range of mathematical problems. Success in mathematics leads to many opportunities for further study and employment.'*

[Coordinating mathematical success: the mathematics subject report - GOV.UK \(www.gov.uk\)](http://www.gov.uk)

**ACOUSTIC CONSULTANT, ACTUARIAL ANALYST, ACTUARY, ASTRONOMER, CHARTERED CERTIFIED ACCOUNTANT, DATA ANALYST, DATA SCIENTIST, INVESTMENT ANALYST, RESEARCH SCIENTIST, STATISTICIAN, TEACHER, SOFTWARE ENGINEER, SOUND ENGINEER, CIVIL ENGINEER**

**“Without mathematics, there's nothing you can do. Everything around you is mathematics. Everything around you is numbers.”**

Shakuntala Devi



CORE SUBJECT - 3 or 2 GCSEs

## AQA GCSE Science

### GCSE Biology, Chemistry and Physics

#### What do I need to know before I can start the course?

There are two tiers of entry for these GCSEs; Higher tier and Foundation tier. To be successful on the higher tier paper, students need to be consistently working at a grade 5 or above and demonstrating such grades in the assessment scores they record for each subject.

#### What will I study in GCSE Science?

Students will study Biology, Chemistry and Physics. This gives students a wide range of understanding of the key elements of each subject.

- In Biology, students will learn about themes such as cell biology, the immune system, genetics and ecology.
- In Chemistry, students will learn about theories such as the structure of the atom, chemical bonding, chemical reactions and the states of matter.
- In Physics, student will learn about concepts such as energy, electricity, forces, waves and magnetism.

At the heart of all scientific concepts is practical experimentation. This is not only one of the most engaging parts of a science education but is also essential for a student's understanding of scientific theory. In addition to the core topics outlined above, students will also be required to demonstrate their competency in eight required practical activities across the range of science topics being studied.

#### How will I be examined?

- Six papers:** 2 x Biology, 2 x Chemistry and 2 x Physics. Each paper will assess different topics.
- Duration:** Each paper is 1 hour 45 minutes.
- Tiers:** Foundation and Higher.
- Weighting:** Papers are equally weighted. Each worth 50% of the grade for each GCSE and has 100 marks.
- Questions:** Multiple choice, structured, closed, short answer and open response.

# SCIENCE: BIOLOGY, CHEMISTRY, PHYSICS



### What can I do after the course? What careers will this course be useful for?

This is a core subject. Just about every career and college or school, will be looking for this qualification as an entry level requirement. In addition, it is essential for any career with a scientific content. This specification provides you with a solid foundation for progression to A-level sciences. A wide variety of careers are accessible for students with A-Levels in science subjects.

**FORENSIC SCIENTIST, ASTRONOMER, ENGINEER,  
PHARMACIST, CRIME SCENE INVESTIGATOR,  
VETERINARY SURGEON, FOOD TECHNOLOGIST,  
METEOROLOGIST, ENVIRONMENTALIST, DOCTOR,  
ARCHITECT, MARINE BIOLOGIST, TOXICOLOGIST**

### Who can I talk to for more information?

Dr Pope (Team Leader) email: [g.pope@shenfield.essex.sch.uk](mailto:g.pope@shenfield.essex.sch.uk)

Mrs Turner (Course Leader: Biology) email: [n.turner-smith@shenfield.essex.sch.uk](mailto:n.turner-smith@shenfield.essex.sch.uk)

Mr Richards (Course Leader: Chemistry) email: [c.richards@shenfield.essex.sch.uk](mailto:c.richards@shenfield.essex.sch.uk)

### What website can I check out?

A comprehensive list of topics is available from the AQA website:

[www.aqa.org.uk/subjects/science/gcse](http://www.aqa.org.uk/subjects/science/gcse)

“Science, for me, gives a partial explanation for life. In so far as it goes, it is based on fact, experience, and experiment.”

Rosalind Franklin



## CORE SUBJECT

### Careers Education, Guidance and Work Related Learning

# CAREERS EDUCATION, GUIDANCE AND WORK RELATED LEARNING

#### What will I learn in Careers Education, Guidance and Work Related Learning?

During your Social Sciences lessons and tutor time in Year 10, you will be studying careers and educational pathways. This will include using web-based careers resources, as well as Sixth Form and College prospectuses, to research your Post-16 options and future career ideas.

There are a number of opportunities and events linked to careers and work-related learning at Key Stage 4:

#### Careers Fair

This is held on an annual basis for all students in Years 8 – 13. Many representatives from employers, colleges, apprenticeship providers and universities attend and are available to give advice and guidance on the options that you have after Key Stage 4 and Key Stage 5.

#### Careers Day and Practice Interviews

At the end of Year 10, you will be interviewed by a professional from local industry in order to help you prepare for a work or academic interview. The practice interviews take place during a dedicated careers day where you will also take part in a variety of other careers and work-related activities.

#### Writing your CV and Personal Statement

In your Social Sciences lessons you get the opportunity to write your CV and Personal Statement. These are useful for work experience applications, job applications and academic applications.

#### Employer Engagement Day

During the summer term of Year 10, you will take part in the Employer Engagement Day which will give you the opportunity to hear from employers from a variety of different industries, carry out work related activities for industry areas of your choice, and ask any questions you may have about the careers you are interested in.

#### Who can I talk to for more information?

Miss Kadem (Team Leader) email: [a.kadem@shenfield.essex.sch.uk](mailto:a.kadem@shenfield.essex.sch.uk)

Mrs Utton (Careers Administrator) email: [l.utton@shenfield.essex.sch.uk](mailto:l.utton@shenfield.essex.sch.uk)



### Impartial Careers Advice and Guidance

All students have access to impartial Careers Guidance meetings with our Careers Advisor. During these one-to-one sessions students receive an individual Action Plan to help them work towards achieving their goals.

### Careers Talks

We invite professionals from a variety of different industries to talk to students about career opportunities in their areas of expertise. In recent years, we have had talks about Health and Social Care, Law, Construction, Engineering, Fashion, Insurance and Banking. Students who are interested in each particular industry are invited to attend.

### Year 10 Work Taster Day

All students in Year 10 will take part in a work shadowing day with a family member or family contact. This will be an opportunity to gain experience of a workplace, speak with employers and employees, and learn about employability skills.

### Guidance and Support when Making Post 16 Plans

In Year 10, all students hear from AIM Apprenticeship Group about apprenticeships available locally and further afield and how to successfully apply for these. In Year 11, students attend a post 16 assembly led by our Careers Advisor laying out all potential pathways as well as an assembly led by a local college about vocational pathways. All students are invited to the Shenfield High School Sixth Form Open Evening. Whatever students decide to do after Key Stage 4, they are provided with all the information and support to ensure they make informed choices leading to successful futures.

High quality careers education and guidance in school or college is critical to young people's futures. It helps to prepare them for the workplace by providing a clear understanding of the world of work including the routes to jobs and careers that they might find engaging and rewarding. It supports them to acquire the self-development and career management skills they need to achieve positive employment destinations. This helps students to choose their pathways, improve their life opportunities and contribute to a productive and successful economy.

Department for Education



# Physical Education

# PHYSICAL EDUCATION

During Year 10 all students will take two one-hour lessons of Physical Education each fortnight. In year 11 students will take one one-hour lesson a fortnight.

Details of GCSE Physical Education are given on pages 40-41 in this booklet.

### What will I gain from the course?

1. The opportunity to develop physical skills in games, swimming, fitness and athletics. (Each group will be involved in a discussion to decide which activities they wish to cover each year.)
2. An awareness of the different types of sports/exercise you may wish to pursue when you are older.
3. The opportunity to develop positive attitudes towards your own fitness and sports participation.
4. An appreciation of the importance of exercise to a healthy lifestyle.
5. The opportunity to take Leadership Awards that will enhance your organisation, communication and inter-personal skills.

### What will I be doing in lessons?

Extending your ability in the specialist areas that you select, as well as trying some additional activities. Your activities will be taken from the following:

American Football	Dance	Kabudi	Softball
Athletics	Dodgeball	Lacrosse	Swimming
Badminton	Extreme Golf	Orienteering	Table Tennis
Basketball	First Aid	Netball	Tennis
Bench ball	Football	Rounders	Trampolining
Cheerleading	Handball	Rowing	Ultimate Frisbee
Cricket	Hockey	Rugby	Volleyball

### What kit do I need?

- 1 Shenfield High School polo shirt with school logo
- 1 pair mainly white trainers with non-marking sole
- 1 pair plain white socks
- 1 pair black shorts with school logo
- 1 pair football boots

- 1 pair long plain black football socks
- 1 Shenfield High School reversible rugby jersey
- Shin pads
- Shenfield High School valuables bag
- Gum shields are advisable*

*Optional items for outdoor lessons:* Shenfield High School tracksuit top  
Plain black jogging/tracksuit bottoms or Shenfield High School P.E. tracksuit.





CORE SUBJECT

## Social Science

Students will follow a non-examined course in Social Sciences at KS4. This consists of vital subject areas which support the wider curriculum and the development of young people.

Details of GCSE Sociology are given on pages 42-43 and OCR Award in Health and Social Care are given on pages 48-49 in this booklet.

### What will I learn in ?

Topics studied include Money Management and Personal Finance, Knife Crime, Race and Tolerance, a range of age appropriate PSHE topics, a full term on Careers Education, Health Education and First Aid.

You will also learn crucial skills for life, developing self-confidence and work related skills and within this, will further develop your literacy and numeracy skills.

### Who can I talk to for more information?

Mrs Hollingsworth (Team Leader) email:  
[l.hollingsworth@shenfield.essex.sch.uk](mailto:l.hollingsworth@shenfield.essex.sch.uk)

### What careers will this course be useful for?

**POLICE OFFICER, PSYCHOLOGIST,  
COUNSELLOR, SOCIAL WORKER,  
YOUTH WORKER, RESEARCHER,  
LOCAL GOVERNMENT OFFICER,  
CHARITY WORKER, BROADCASTER  
POLITICIAN, LEGAL PROFESSIONAL**

“Social Science helps us to better understand and appreciate the diversity of the human experience.”

Kwame Anthony Appiah

SOCIAL SCIENCES

Our **VISION**  
is to **PREPARE**  
our **STUDENTS**  
to **EMBRACE**  
all **OPPORTUNITIES**  
and **FULFIL**  
all **AMBITIONS**





# AQA GCSE Fine Art

### What will I learn in GCSE Fine Art?

During the course you will complete four projects:

- Natural Forms
- Buildings
- Figure in Interior
- An Exam Project

Throughout these projects you will study a range of different artists who use different media and you will experiment with creating a piece of art influenced by both contemporary and traditional artists. You will learn how to research, analyse and respond to artists, illustrators and designers work. The projects will teach you how to use the fundamental skills of drawing and research to underpin your work and develop your own ideas into a successful outcome. You will explore a variety of media such as painting, sculpture, textiles, photography, printmaking and digital manipulation, to explore techniques beyond the traditional, such as batik, ceramics, mixed media and collage: allowing you to expand on your art skills. You will be encouraged to explore and develop your own strengths and expand your range of skills giving you a solid art skills base for further study in the creative arts. You will also have the opportunity to attend trips, clubs and workshops specially designed to enhance your learning experience.

### What do I need to know before I can start the course?

You will need to have competent drawing skills and a passion for the subject. You will also need to be able to present work neatly in sketchbooks or on display boards. Independent study is essential for this course as you are required to consistently complete work outside of taught lessons.

### How will I be examined?

Students will be examined across two components:

- Component one – coursework worth 60% of overall grade
- Component two – Exam project worth 40% of overall grade

### Who can I talk to for more information?

Mrs Kemp (Team Leader) email: [d.kemp@shenfield.essex.sch.uk](mailto:d.kemp@shenfield.essex.sch.uk)

Mrs Toland email: [a.toland@shenfield.essex.sch.uk](mailto:a.toland@shenfield.essex.sch.uk)

Mrs Clayton email : [e.clayton@shenfield.essex.sch.uk](mailto:e.clayton@shenfield.essex.sch.uk)

Please speak to staff for exemplar work. Also feel free to chat to any of our Year 10 and 11 students.



**What can I do after the course? What careers will this course be useful for?**

Following Fine Art GCSE you could do Fine Art A Level or an Extended Art and Design Diploma. It would also complement and give a strong foundation for other creative courses such as:

**FASHION & TEXTILES, PHOTOGRAPHY, TEACHING, ANIMATION, GRAPHIC DESIGN, ILLUSTRATION, TATOOIST, VISUAL MEDIA, GAMES DESIGN, ANIMATION, GRAPHIC DESIGN, ARCHITECTURE, PRODUCT DESIGN, INTERIOR DESIGN, THEATRE/ FILM DESIGN, ART THERAPIST, MAKE UP ARTIST**

**What websites can I check out?**

AQA subject specification guide for GCSE Art & Design:

[www.aqa.org.uk/subjects/art-and-design/gcse/art-and-design-8201-8206/introduction](http://www.aqa.org.uk/subjects/art-and-design/gcse/art-and-design-8201-8206/introduction)

AQA Specification for GCSE Art & Design (Fine Art):

[www.aqa.org.uk/subjects/art-and-design/gcse/art-and-design-8201-8206/subject-content/fine-art](http://www.aqa.org.uk/subjects/art-and-design/gcse/art-and-design-8201-8206/subject-content/fine-art)

AQA Art & Design Student guide:

<https://filestore.aqa.org.uk/resources/art-and-design/AQA-GCSE-ART-STUDENT-GUIDE.PDF>

**“ Art has the power to transform, to illuminate, to educate, inspire and motivate. ”**

Harvey Fierstein



## EDEXCEL GCSE Business Studies

# BUSINESS STUDIES

If the following concepts interest you, then you should consider studying Business Studies.

- communicating and explaining your ideas
- thinking creatively and making decisions
- working with numbers to solve business problems
- learning about the world of business through real and relevant local and international brands

Business Studies is not just a theory-based subject, it is applied to the behaviour and decisions of firms of all sizes, which impact us as individuals daily. It will help you to learn about businesses and the way they operate in today's society. You will gain skills which will be useful in a wide range of jobs, in the further study of Business Studies and in your personal life as a global citizen.

### What will I learn in GCSE Business Studies?

Theme 1 of the course explores small and medium size businesses. This will begin with looking at the risks and rewards of running a business, then considering how to add value to goods or services. You will investigate the role of market research, and how this will allow you to combat the threat of external factors like competition. Finally you will build an awareness of the key economic performance measures and how this can impact you as an individual as well as a business.

Theme 2 of the course focuses more on large multinational corporations. This begins with the role of globalisation, looking at how multinational corporations have become a driving force and benefitted from the world becoming more inter-connected. You will then learn about the 4 main departments within a big business; marketing, operations, human resources and finance.

### What do I need to know before I can start the course?

The assessment for GCSE Business requires you to take information from a case study and use it in your answer. Therefore, an awareness of existing information like your reading age will help you to identify how suitable you are for the assessments within the course. This differs significantly to the Enterprise and Marketing course, so please consider this carefully when making a choice between the two subjects.

## How will I be examined?

You will be assessed via two written exams which are both 1 hour and 45 minutes long, 90 marks and each worth 50% of the total GCSE.

Paper 1 – Investigating Small Business

Paper 2 – Building a Business

There are three sections in the paper. Each section is ramped, starting with multiple choice questions, moving to short answer questions and ending with extended writing. Sections B and C are based on real life, relevant business contexts and examples.

## What can I do after the course? What careers will this course be useful for?

After this qualification you'll understand the world of business and have developed skills in:

- Making decisions and developing persuasive arguments
- Creative and practical problem solving
- Understanding data, finance and communication

It's also a great step in preparing you for further and higher education such as A-levels and BTEC courses. A GCSE Business course could prepare you for an entrepreneurial role and help you to gain an understanding of what is involved in a business-related profession, like accountancy, law, marketing or the leisure and tourism industry.

**BUSINESS ANALYST, SOCIAL MEDIA MANAGER, RETAIL MERCHANDISER, INVESTMENT ANALYST, DIGITAL MARKETER, FINANCIAL ADVISER, BUSINESS PROJECT MANAGER, HR OFFICER, BUSINESS DEVELOPMENT MANAGER, ESTATE AGENT, CUSTOMER SERVICES MANAGER, MANAGEMENT CONSULTANT, BANK MANAGER**

## Who can I talk to for more information?

Any member of staff from the Business and Economics department situated at the top of T block.

Mr Shearing (Team Leader) email: [b.shearing@shenfield.essex.sch.uk](mailto:b.shearing@shenfield.essex.sch.uk)

## What websites can I check out?

[Edexcel GCSE Business \(2017\) | Pearson qualifications](#)

[GCSE Business - Edexcel - BBC Bitesize](#)

[Business - BBC News](#)

“ Good business leaders create a vision, articulate the vision, passionately own the vision, and relentlessly drive it to completion. ”

Jack Welch



OPTION SUBJECT—1 GCSE

## OCR GCSE Computer Science

# COMPUTER SCIENCE

### What will I learn in GCSE Computer Science?

This is a challenging but exciting GCSE qualification that requires hard work and dedication. The course contains two externally moderated examinations. The course provides a real, in-depth understanding of how computer technology works with a solid insight of what goes on 'behind the scenes'. Programming in Python is a focus in this course, with a passion for programming essential to success. In addition, you will learn computational thinking skills that will support you in all aspects of professional life.

### What do I need to know before I can start the course?

To undertake the Computer Science GCSE course, you should have made good progress by actively participating in a range of learning activities in all of your KS3 Computer Science lessons. Furthermore, to be successful on the course you will need to display a number of analytical and logical thinking skills and be prepared to work within challenging timeframes with a range of technology. It is essential to have a strong mathematical knowledge.

### How will I be examined?

Students will complete two handwritten exam papers. Both are worth 80 marks and are 90 minutes long. Each paper is worth 50% of your GCSE.

### Who can I talk to for more information?

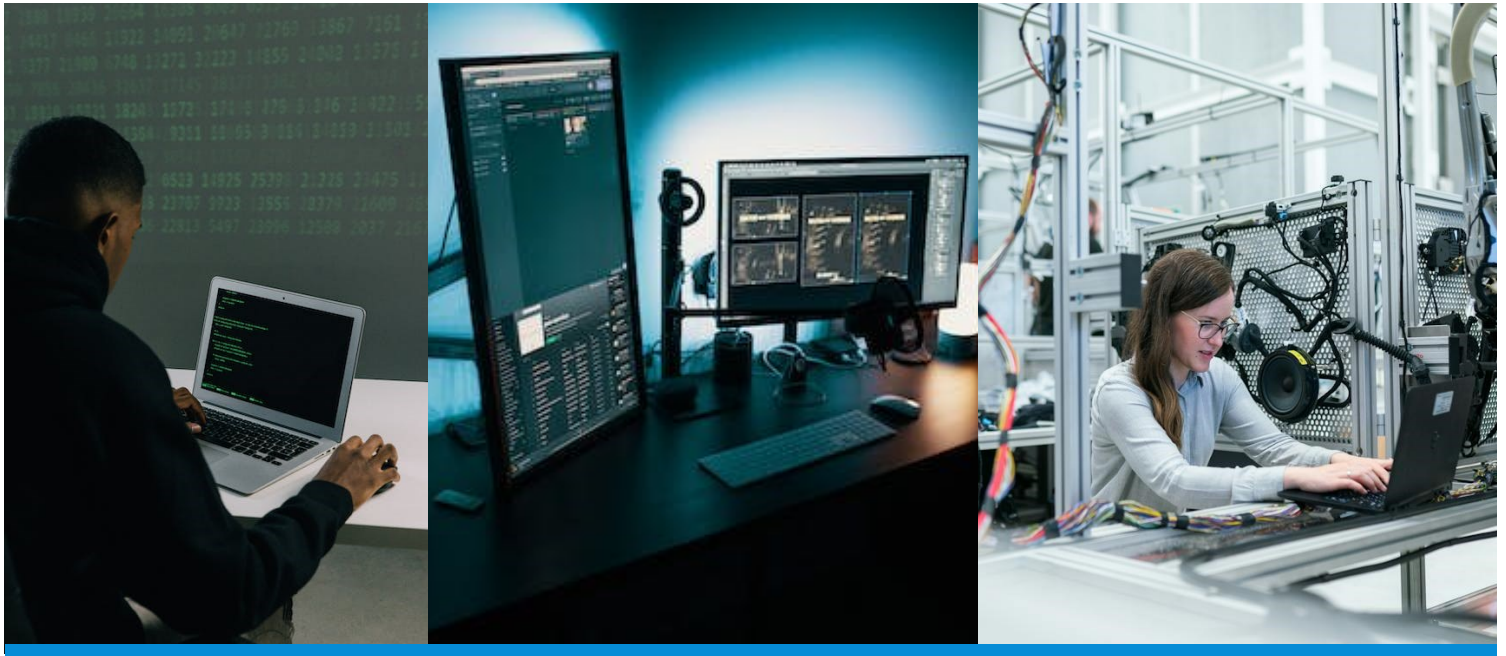
Mr Maling (Team Leader) email: [d.maling@shenfield.essex.sch.uk](mailto:d.maling@shenfield.essex.sch.uk)

### What websites can I check out?

[www.ocr.org.uk/qualifications/gcse/computer-science-j277-from-2020/](http://www.ocr.org.uk/qualifications/gcse/computer-science-j277-from-2020/)

[bbc.co.uk/news/technology](http://bbc.co.uk/news/technology)





### What can I do after the course? What careers will this course be useful for?

This course will enable you to develop critical thinking, analysis and problem solving skills, which can be transferred to further learning and to everyday life. If you want to go on to higher study and employment in the field of Computer Science you will find that this course provides a valuable stepping stone. Research shows that graduates with a Computer Science degree are highly sought after for careers in finance, engineering, teaching, software development and many others.

*'Computer Science graduates are reaping the benefits of the degree they hold, as despite employment rates generally declining in most countries, computer science and IT jobs are consistently being given out and the scope is expanding in this field. One of the reasons many opt to study for a computer science degree in the United Kingdom is that IT departments have one of the highest paying starting salaries, and there are excellent packages available for potential employees in this field.'*

[How Beneficial Can be a Computer Science Degree in UK? \(ahzassociates.co.uk\)](http://ahzassociates.co.uk)

**COMPUTER PROGRAMMER, DATA SCIENTIST,  
SOFTWARE ENGINEER, WEBSITE/APP DEVELOPER,  
CYBERSECURITY CONSULTANT, FORENSIC  
COMPUTER ANALYST, E-LEARNING DEVELOPER,  
ARCHITECTURAL TECHNOLOGIST, INTELLIGENCE  
ANALYST, GEOSPATIAL TECHNICIAN, INDEXER,  
UX DESIGNER, IT SECURITY CO-ORDINATOR**

“ You really never know where your path will lead you, but working with technology was truly the best way I could make a difference. ”

Reshma Saujani



# AQA GCSE Drama

# DRAMA

## What will I learn in GCSE Drama?

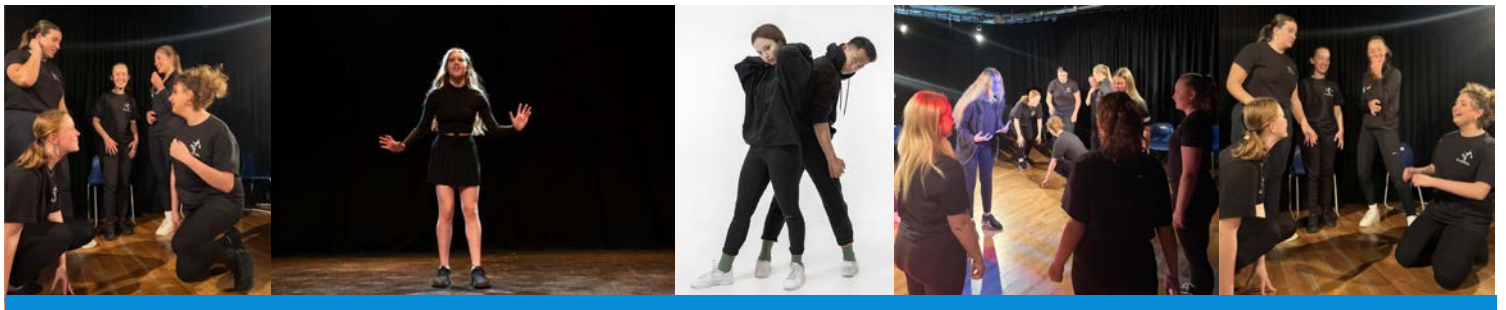
AQA's GCSE qualification in Drama has been designed to be a practical, engaging and creative specification for students to study. It will provide opportunities to examine drama and the work of others, to explore a range of drama as a practical art form, and to work independently to create your own drama performances making informed artistic choices. You will also have the opportunity to visit professional productions to gain a greater appreciation of theatre as an actor and audience member. The specification is designed to create independent students, critical thinkers and effective decision-makers – all personal attributes that can make students stand out as they progress through their education and into employment.

## How will I be examined?

Students will complete three components; one devised performance, one text performance and one written exam. Students must study two different texts in the GCSE course.

Component title	Component overview
Understanding drama (written) Mark: 80, worth 40%  1.45 hrs Written exam.	This component requires students to study a text and a performance. For Section A, students study one performance text in detail from a set list given by the exam board. It assesses students' knowledge and understanding of how drama is developed and performed. In Section B, students will be required to analyse and evaluate a live theatre performance they have seen.
Devising drama (practical) Mark: 80, worth 40% Course work and performance to be marked by a Shenfield teacher and presented to an audience.	Students will create their own devised performance based on a chosen stimulus. In addition to the performance, students will be marked on an accompanying portfolio with evidence of the process and decisions made whilst creating and developing their performance.
Texts in practice (practical) Mark: 40, worth 20% Performance to be marked by an external examiner and presented to an audience.	Students will perform two different extracts from a professional play text.  This will be performed in front of a visiting examiner and live audience.

## What websites can I check out?



### What do I need to know before I can start the course?

GCSE Drama is an extremely engaging course, is highly practical and requires both talent and teamwork skills; candidates must be highly reliable and committed. A flair for acting and proficient literacy skills are essential. You will need to be prepared to commit to the written elements as well as the performances. The portfolio in regards to the devised work should be a creative document including photographs, drawings and rehearsal techniques that demonstrates and clearly outlines how you evolve and shape the Drama. In this way students can still adopt an imaginative way in which to work that is not constricted to only the written medium. Students will need to practise and rehearse outside of school hours when you come to the performance modules and commit to ensuring excellent knowledge of theatre when answering the written exam.

Extra-curricular opportunities include acting or taking on a technical role in the main school production, Drama clubs, directing the lower school production, specialist workshops and theatre trips designed purely for your aptitude and needs.

### What can I do after the course? What careers will this course be useful for?

GCSE Drama students can proceed to study A-level Theatre Studies at Shenfield High School. Drama encourages good communication, commitment and concentration skills, an understanding of other points of view and a strong sense of working in a team and most importantly confidence; all are qualities of real value in the workplace of any career.

**ACTOR, ENTERTAINER, ARTS ADMINISTRATOR,  
DRAMATHERAPIST, EVENTS MANAGER,  
VLOGGER, TOUR MANAGER, TV/FILM PRODUCER  
TV PRESENTER, DIGITAL MARKETER, SET DESIGNER  
IMAGE CONSULTANT, MEDIA RESEARCHER,  
COMMUNITY ARTS WORKER, SOUND TECHNICIAN**

### Who can I talk to for more information?

Ms Sherwood (Team Leader) email: [e.sherwood@shenfield.essex.sch.uk](mailto:e.sherwood@shenfield.essex.sch.uk)

“ The audience wants to be attracted not by the critics, but by a great story. You must deliver to the audience emotion - and when I say emotion, I mean suspense, drama, love. ”

Dino De Laurentiis



## EDUQAS GCSE Film Studies

# FILM STUDIES

### What will I learn in GCSE Film Studies?

The Film Studies GCSE has been designed to not only ignite a passion for film but also to encourage broader cultural and historical perspectives on this academic area of study. This course of learning encourages you to watch, engage critically with, and explore a wide range of film; to develop and sustain confident personal responses to film via textual analysis; and to enjoy a variety of critically acclaimed films across the major genres, including films from different cultural perspectives, and from the 1950s to the present day.

You will read about, watch, hear and discuss different types of film texts and you will produce a screenplay of your own. You already know a lot about film, from your own general knowledge and from films being used in the KS3 English curriculum to support learning, this GCSE builds on this understanding and you will learn how to express your ideas about film in a more mature and thoughtful manner. Some of the films studied over the two years will include:

- Attack The Block (2011)
- ET (1982)
- Invasion of the Body Snatchers (1956)
- Jo Jo Rabbit (2019)
- Whiplash (2015)
- Tsotsi (2005)

### What do I need to know before I can start the course?

No previous knowledge is required, just an active curious mind. It must be stressed, however, that you will not be 'watching films' all of the time and the course is a very academic option, requiring a great deal of concentration and focus from all students.

### How will I be examined?

Assessment for GCSE Film Studies is made up of three components. There will be two examinations taken at the end of the course; they are both worth 35% of the GCSE and also a non-examination assessment (coursework) component – writing a screenplay – which is worth 30% of the GCSE.

### Who can I talk to for more information?

Mr Sheriff (Team Leader) who can be found in room i71 or email: [m.sheriff@shenfield.essex.sch.uk](mailto:m.sheriff@shenfield.essex.sch.uk)



What can I do after the course? What careers will this course be useful for?

Film Studies is a skills-based course. It allows you to develop your ability to manage your time and meet deadlines, work individually to organise, plan and create your own screenplays and ideas for films. These attributes are valuable for entry in numerous careers and courses such as: Teaching, Journalism, Advertising, Marketing and further study at A Level.

**ADVERTISER, MARKETER, CINEMATOGRAPHER,  
BROADCASTER, FILM DIRECTOR/PRODUCER,  
EDITOR, LOCATION MANAGER, PRODUCTION  
DESIGNER, RUNNER, TELEVISION PRODUCTION  
COORDINATOR, RESEARCHER, CAMERA  
OPERATOR, EVENT MANAGER, SPECIAL EFFECTS  
TECHNICIAN, SCREEN WRITER, MAKEUP ARTIST**

What websites can I check out?

[GCSE Film Studies | Edugas](#)

“ The thing that makes a great movie is one that's not just entertainment, not just horror or sci-fi or whatever. The ones I love are the genre pictures with some subversive message underlining it.”

Ethan Hawke



# AQA GCSE Food and Nutrition

# FOOD AND NUTRITION

## What will I learn in GCSE Food and Nutrition?

GCSE Food Preparation and Nutrition is an exciting and creative Science based Food course, which focuses on practical cooking skills to ensure you develop a thorough understanding of nutrition, food provenance and the working characteristics of food materials. At its heart, this qualification focuses on nurturing your skills through Science experiments to give you a strong understanding of nutrition.

Course content:

Food preparation skills are integrated into five core topics:

- Food, Nutrition and Health – Macro Nutrients, Micro Nutrients, Nutritional Needs and Health.
- Food Science – Cooking of Food, Heat Transfer and the Functional and Chemical Properties of Food.
- Food Safety – Food Spoilage, Contamination and the Principles of Food Safety.
- Food Choice – Factors affecting Food Choice, British and International Cuisines, Sensory Evaluation, Food Labelling and Marketing.
- Food Provenance – Environmental Impact and Sustainability of Food, Food Processing and Production.

## What do I need to know before I can start the course?

This is an applied Science course and not a vocational course. Its demands are much more than just practical work. You will need to have a curious mind about how the industry functions, the importance of nutrition and health and safety aspects within the industry. You will also need to have a strong interest in Science. Students will be expected to bring in their own ingredients and products for all practical based lessons and therefore must have good organisational skills. However, you will not be cooking every lesson. Practical work contributes for approximately 15% of your final grade and you will have a range of theory work to cover.

## What websites can I check out?

The 12 key practical skills set by AQA for this course, which we cover in Year 10:

[AQA | Food Preparation and Nutrition | Subject content | Food preparation skills](#)

During the course we will also differentiate between the skill levels of your dishes, notably when we complete your NEAs. Suggested basic, medium, and complex recipes:

[Notes and guidance: Skill levels in food preparation \(aqa.org.uk\)](#)

The careers mentioned will also give you guidance on a career path :

[Catering jobs search from Careers In Catering UK](#)

## How will I be examined?

### EXAM: Food preparation and nutrition (50%) Written exam: 1 hour 45 minutes

A final written examination takes place in the Summer Term of Year 11. The paper will be made up of 20 multiple choice questions worth 20 marks, and 5 questions each with a number of sub questions worth 80 marks.

### NON-EXAM ASSESSMENT (NEA): Task 1: Food Science investigation (15%) Written Report

Assessing understanding of the working characteristics, functional and chemical properties of ingredients. Students will submit a written report (1,500–2,000 words) including photographic evidence of the practical investigation.

### NON-EXAM ASSESSMENT (NEA): Task 2: Food preparation assessment (35%) Written Portfolio

Students' knowledge, skills and understanding in relation to the planning, preparation, cooking, presentation of food and application of nutrition related to the chosen task. Students will prepare, cook and present a final menu of three dishes within a single period of no more than three hours, planning in advance how this will be achieved. Students will submit a written portfolio (15 A4 pages) including photographic evidence.

## What can I do after the course? What careers will this course be useful for?

Students taking Food are able to develop their skills further. The course prepares students for study towards degrees with a focus on Food and Nutrition Science, Food Manufacturing, Food Biotechnology (a big growth area) and links in well with Sports Science degrees. This GCSE also prepares students who are looking for apprenticeships in the catering industry and qualifies students for a range of catering courses.

The Food Industry and the area of Health and Nutrition are at the forefront of our society today. Opportunities in this field are continually growing. Career opportunities can include Dietician, Midwife, General Practice Nurse, Nutritionist, and Paediatrician.

In addition, should creativity be your strength, your career path may include Food Journalism and Photography, Food demonstration, Retail Sales and Marketing or a rewarding career as a Food Product Development (Technologist). Other possibilities include Social work, Teaching or Environmental Health Officer. You could also combine food with science, media or psychology for some interesting career paths.

**BAKER, BARISTA, CAKE DECORATOR, CATERING ENGINEER, CHEF/SOUS CHEF, HOUSEKEEPER, CONFERENCE ORGANISER, CONSUMER SCIENTIST, FOOD TECHNOLOGIST, KITCHEN MANAGER, PUBLICAN-LICENSEE, WAITING/BAR STAFF, FOOD BIOTECHNOLOGIST, NUTRITIONIST**

## Who can I talk to for more information?

Mr Costello (Course Leader) in T55/T54, or you can email [r.costello@shenfield.essex.sch.uk](mailto:r.costello@shenfield.essex.sch.uk)

“ I believe that 'Food is a giver.' It gives you nutrition, health, and at times can give you recognition, it did in my case, and you got to treat it with that kind of respect. ”

Ranveer Brar



# EDEXCEL GCSE French and/or Spanish

# FRENCH AND/OR SPANISH

### What will I learn in GCSE French and Spanish?

Language learning is fun, yet challenging. Through the GCSE syllabus you will gain the opportunity to explore a range of topics and themes whilst continuing to develop your ability to speak and write in Spanish and French. Lessons focus on your ability to understand the language and to communicate effectively.

### What do I need to know before I can start the course?

To be successful on the French or Spanish GCSE course, you will need to have demonstrated good progress throughout Years 7, 8 and 9 by actively participating in a range of learning activities both in lessons and through homework tasks.

You must be prepared for an academic course which requires regular vocabulary learning, completion of homework tasks on a weekly basis, good organisation and time management, but above all, resilience and curiosity.

### How will I be examined?

You must complete all four components in either Foundation Tier (Grades 1-5) or Higher Tier (Grades 4-9) to be awarded GCSE French or Spanish. Each component accounts for 25% of the total GCSE grade.

- Paper 1 – Speaking (50 marks)
- Paper 2 – Listening and Understanding (50 marks)
- Paper 3 – Reading and Understanding (50 marks)
- Paper 4 – Writing (50 marks)

### Who can I talk to for more information?

Mr Shaunak (Team Leader) email: [a.shaunak@shenfield.essex.sch.uk](mailto:a.shaunak@shenfield.essex.sch.uk)

Mrs Shaunak-Hobbs email: [k.shaunak@shenfield.essex.sch.uk](mailto:k.shaunak@shenfield.essex.sch.uk)





**What can I do after the course? What careers will this course be useful for?**

GCSE Modern Foreign Language provides a solid basis for the rigours of A Level study and beyond. Many universities and Sixth Form colleges require a good grade at GCSE in a Modern Foreign Language as a basic entry requirement.

A wide variety of careers are also accessible to those with a good knowledge of a foreign language:

**LAW, ENGINEERING, TRANSLATING, FINANCIAL SERVICES & BANKING, JOURNALISM, MEDICINE, AVIATION, ACADEMIC RESEARCHER, DIPLOMATIC SERVICE OFFICER, INTELLIGENCE ANALYST, INTERNATIONAL AID/DEVELOPMENT WORKER, INTERPRETER, POLITICAL RISK ANALYST, MARKETING, PUBLISHING, SALES EXECUTIVE**

**What websites can I check out?**

[GCSE French Specification Issue 1 \(pearson.com\)](https://www.pearson.com/qualifications/gcse/french/specification/issue-1)

[GCSE \(9-1\) Spanish Specification - Issue 1 \(pearson.com\)](https://www.pearson.com/qualifications/gcse/spanish/specification/issue-1)

“ Learning another language is not only learning different words for the same things, but learning another way to think about things.”

Flora Lewis



## EDEXCEL B GCSE Geography

### What will I learn in GCSE Geography?

The GCSE course has three components:

- Global Geographical Issues: The Hazardous Earth, Development Dynamics and Challenges of an Urbanising World.
- UK Geographical Issues: The UK's Evolving Physical and Human Landscape.
- People and Environmental Issues: Making Geographical Decisions.

We study these topics with a variety of examples from the local area, UK and other countries around the world.

In lessons, a variety of approaches are used to guide you through the course. Atlases, maps, videos, texts, the internet and other resources are used to illustrate and help you interpret the ideas and examples studied. Class discussions and individual work help you to understand and communicate your thoughts and ideas. You will be expected, in addition to your written work in class, to produce reports, answer exam style questions, suggest plans for solving problems, complete extra reading and research, as well as to give your own views on issues.

### What fieldwork is expected?

Fieldwork is an essential requirement of the course and must be undertaken by all students. There are two days of fieldwork, as outlined by the exam board, that have to be completed. These will enable you to answer questions on Paper 2 which will be specifically about your experiences. As well as this, it will also increase your understanding of the concepts on this paper, and these two days have to be completed to meet the requirements set out by Edexcel.

### What do I need to know before I can start the course?

Geography is an exciting subject to study. It will give you an insight into the wider world and you will be able to explore your thoughts and opinions on a variety of issues. The ability to work to deadlines and be a member of a team will be valuable skills. An interest in current affairs will also help you in your GCSE Geography. Geography is an examined, written subject that has no coursework component.

### How will I be examined?

There are three exams at the end of Year 11, each is 90 minutes long.



### What can I do after the course? What careers will this course be useful for?

Geography is regarded as a facilitating subject by the Russell Group and Oxbridge Universities, this means that Geography is highly regarded as good preparatory subject for any degree at the best universities in the UK. Students who achieve a Geography GCSE will find that employers see it as a valuable qualification; it bridges the gap between the Arts and Sciences and is a good base for further study. It is also excellent preparation for many careers requiring practical problem solving skills, report writing, investigation, map-work, the ability to work with others, and an understanding of the environment around us.

**ARCHITECTURAL TECHNOLOGIST, BUSINESS ANALYST, CARTOGRAPHER, GEOLOGIST, DATA ANALYST, ENVIRONMENTAL CONSULTANT, MARKETING EXECUTIVE, TRANSPORT PLANNER, SOCIAL RESEARCHER, TOWN PLANNER, LANDSCAPE ARCHITECT, MARKET RESEARCHER, NATURE CONSERVATION OFFICER, TEACHER**

### Who can I talk to for more information?

Mr Springett (Team Leader) email: [h.springett@shenfield.essex.sch.uk](mailto:h.springett@shenfield.essex.sch.uk)

### What website can I check out?

[Geography B \(9–1\) from 2016 | Pearson qualifications](#)

“The study of geography is about more than just memorizing places on a map. It's about understanding the complexity of our world, appreciating the diversity of cultures that exists across continents. And in the end, it's about using all that knowledge to help bridge divides and bring people together.”

Barack Obama



## EDEXCEL GCSE History

### What will I learn in GCSE History?

History matters. Our GCSE encompasses a wide range of themes, historical events and eras, so you can understand the past and its impact on the world around us.

The History GCSE is taught across 4 units:

Unit 1 is about medicine through time with a depth study on trench warfare in WW1. In this unit you will develop an understanding of how key features in the development of medicine were linked with the key features of society in Britain from the Middle Ages up to the present day. You will develop an understanding of the nature and process of change and the influence of factors inhibiting or encouraging change within periods and across time.

Unit 2 is about Henry VIII. In this unit you will develop an understanding of Henry's relationship with the church and government, and how these relationships changed over time. You will also study his ministers, Thomas Wolsey and Thomas Cromwell and learn about their rise and fall.

Unit 3 is about the American West. You will learn about the lives of the Indigenous peoples of the Plains and how they were able to survive in such a harsh environment. You will learn about different groups of people who travelled west across America and the impact that they had on the Indigenous people of the Plains who already lived there.

Unit 4 is about Weimar and Nazi Germany. In this unit you will start off by learning about how life in Germany changed after WW1 during the time of the Weimar Republic. You will then study the rise of Hitler and the Nazis before analysing how life changed for different groups of people living in Nazi Germany.

### What do I need to know before I can start the course?

You need have no specific prior knowledge before you start the History course, but some general historical knowledge is preferable. You do need to consider your commitment to the subject and the fact that the course heavily relies on reading and writing. However, if you have a passion for learning about the past, this should be the primary reason for choosing it as an option subject.

### Who can I talk to for more information?

Mrs Howard (Team Leader) email: [s.howard@shenfield.essex.sch.uk](mailto:s.howard@shenfield.essex.sch.uk)

## How will I be examined?

You will sit three examinations at the end of Year 11.

- Paper 1 - 1 hr 15 mins  
A thematic study of Medicine in Britain c1250 to the present with a study of the British sector of the Western Front during the First World War: injuries, treatment and the trenches.
- Paper 2 - 1 hr 45 mins  
A period study of the American West, c 1835-c1895 and a British Depth Study on Henry VIII and his ministers, 1509-40.
- Paper 3 - 1 hr 20 mins  
A Modern Depth Study on Weimar and Nazi Germany 1918-39.

## What can I do after the course? What careers will this course be useful for?

History is a strong academic subject which provides a good basis for many careers and further study because of the skills it teaches. You could use your study of History to study A-levels in History, Sociology and Law.

The subject is highly thought of by employers and has links to careers in teaching, museum work, archaeology, law, journalism, TV and film research, the travel industry, librarianship, antiques or art gallery work. It is seen as an important subject, whose students are bright, articulate and have good employment prospects.

History is regarded as a facilitating subject by the Russell Group and Oxbridge Universities. This means that History is highly regarded as a good preparatory subject for any degree at the best universities in the UK.

**TEACHER, MUSEUM CURATOR, ARCHAEOLOGIST,  
LAWYER, JOURNALIST, TV AND FILM  
RESEARCHER, TRAVEL INDUSTRY, LIBRARIAN,  
ANTIQUES, ART/GALLERY WORK, ACADEMIC  
RESEARCHER, ARCHIVIST, HERITAGE MANAGER,  
MARKER, POLITICIAN, ART & DESIGN HISTORIAN**

## What websites can I check out?

[Edexcel GCSE History \(2016\) | Pearson qualifications](#)

[Historical Association – the UK national charity for history](#)

“Most of us spend too much time on  
the last 24 hours and too little on  
the last 6,000 years.”

Will Durant



## OCR GCSE Music

### What will I learn in GCSE Music?

This GCSE course is taught over two years and is designed for students who have an interest in all aspects of music. You will focus on 5 different areas of Musical Study ranging from Baroque & Classical Music to Film Music, Pop and Rock to music of different cultures.

The course is broken down into three main strands.

- Performance = 30%
- Composition = 30%
- Listening and Appraising - Examination = 40%

*'A recent study in the UK found that playing a musical instrument appears to enhance general performance in other subjects at GCSE(1). Other studies have shown that music benefits learning by activating all areas of the brain(2): auditory (sound processing); motor (rhythm processing); and limbic (emotions).'*

[Why GCSE Wilts Oct19.pdf \(wiltshiremusicconnect.org.uk\)](#)

1 The impact of instrumental music learning on attainment at 16 [bit.ly/musicandGCSEresults](http://bit.ly/musicandGCSEresults)

2 How playing an instrument benefits your brain [bit.ly/musicbrainvideo](http://bit.ly/musicbrainvideo)

### What do I need to know before I can start the course?

- You will be expected to perform a solo piece.
- Basic music theory is beneficial, but not essential.
- You will be expected to take part in extra-curricular activities within the department, and concerts as part of the GCSE course.

### How will I be examined?

- Students will be expected to compose two pieces, one free choice and one to a brief.
- Students will also be expected to record a solo and ensemble performance which form 60% of the assessed course.
- Finally, students will sit a 90 minute written exam at the end of the course.

### Who can I talk to for more information?

Mr Willsher (Team Leader) email: [p.willsher@shenfield.essex.sch.uk](mailto:p.willsher@shenfield.essex.sch.uk)



### What can I do after the course? What careers will this course be useful for?

- Further study of A Level Music, A Level Music Technology or BTEC Extended Certificate in Music (Performance).
- The qualification is relevant for jobs in the music industry, publishing, entertainment, teaching and many more. Music is an excellent addition to a CV, making it stand out and demonstrating to future employers that you are creative.
- The course encourages workplace skills such as communication, teamwork, confidence and organisation.

**MUSIC PRODUCER, MUSIC THERAPIST, MUSICIAN, PRIVATE MUSIC TUTOR, TEACHER, SOUND DESIGNER, SOUND ENGINEER, SOUND TECHNICIAN, SPECIAL EFFECTS TECHNICIAN, FILM/TELEVISION INDUSTRY, CHOREOGRAPHER, COMMUNITY ARTS WORKER, RADIO BROADCASTING, THEATRE STAGE MANAGEMENT**

### What websites can I check out?

[GCSE - Music \(9-1\) - J536 - OCR](#)

“ Music does a lot of things for a lot of people. It's transporting, for sure. It can take you right back, years back, to the very moment certain things happened in your life. It's uplifting, it's encouraging, it's strengthening.”

Aretha Franklin



## EDEXCEL GCSE Physical Education

# PHYSICAL EDUCATION

### What will I learn in GCSE Physical Education?

#### Fitness and Body Systems

- The functions of the skeletal, muscular, cardiovascular and respiratory systems.
- The short and long term effects of exercise.
- How to optimise training and prevent injury.
- The relationship between health and fitness.

#### Health and Performance

- The consequences of a sedentary lifestyle and the importance of a healthy diet.
- The importance of mental preparation for performance.
- The impact of commercialisation of physical activity and sport.
- The engagement patterns of different social groups in physical activity and sport.

### What do I need to know before I can start the course?

- You should enjoy regular exercise and have a keen interest in sport.
- You should attend extra-curricular sports clubs and represent the school in regular fixtures.
- You will be expected to complete regular detailed homework.
- Your fitness will be tested on numerous occasions throughout the course.
- You will be required to participate in all sports during practical lessons.
- You will be expected to show a high level of commitment to both theory and practical PE lessons.

We shall cover a variety of activities each year. All students undertake games, swimming and athletic lessons to determine their strengths. The list of possible activities students can be assessed in is extensive. If you have a specialist sport that you compete in outside of school and would like to include, speak to a member of the PE Department for clarification.

**SPECIAL KIT REQUIREMENTS:** GCSE PE candidates are expected to wear Shenfield PE polo shirts and shorts. The PE tracksuit is also recommended since candidates are expected to be involved with extra-curricular sport and outdoor activities. Candidates will also be required to participate in swimming activities on the course for which they will need a black swimsuit/trunks and a swimming hat.



## How will I be examined?

- You will sit two exams at the end of Year 11, these equate to 60% of your overall grade.
- The practical element is 30% of overall grade.
- You are asked to create a Personal Exercise Programme. This coursework task equates to 10% of the final grade.

## What can I do after the course? What careers will this course be useful for?

You could further your education to study A level PE or BTEC Sport. There are numerous opportunities within the leisure industry and other careers such as:

**FITNESS INSTRUCTOR, PERSONAL TRAINER, COACHING, SPORTS DEVELOPMENT, SPORTS PSYCHOLOGY, PHYSIOTHERAPY, FITNESS CENTRE MANAGEMENT, SPORTS DEVELOPMENT OFFICER, JOURNALISM, BROADCASTING, CLINICAL SCIENTIST, NUTRITIONIST, TEACHING, OUTDOOR ACTIVITIES MANAGEMENT**

## Who can I talk to for more information?

Mr Hall (Team Leader) email: [m.hall@shenfield.essex.sch.uk](mailto:m.hall@shenfield.essex.sch.uk)

Mrs G Cosentino (Course Leader) email: [g.cosentino@shenfield.essex.sch.uk](mailto:g.cosentino@shenfield.essex.sch.uk)

Mr Rigg email: [j.rigg@shenfield.essex.sch.uk](mailto:j.rigg@shenfield.essex.sch.uk)

Miss J Matthews email: [j.matthews@shenfield.essex.sch.uk](mailto:j.matthews@shenfield.essex.sch.uk)

## What websites can I check out?

[Edexcel GCSE Physical Education \(2016\) | Pearson qualifications](#)

[TeachPE.com – Sports Coaching & Physical Education](#)

[GCSE Physical Education - BBC Bitesize](#)

“Sport has literally changed my life. I’m here because of sport. It has given me a lot of confidence, a lot of courage, and a lot of discipline. It’s helped me to be the person that I’ve grown to be today.”

Serena Williams



# WJEC EDUQAS GCSE Sociology

# SOCIOLOGY

## What will I learn in GCSE Sociology?

The GCSE Sociology course is divided into two components.

### Component 1: Understanding Social Processes

- Key concepts and processes of cultural transmission
- Families
- Education
- Sociological research methods

### Component 2: Understanding Social Structures

- Applied methods of sociological enquiry
- Crime and deviance
- Social differentiation and stratification enquiry

## What do I need to know before I can start the course?

No prior knowledge of Sociology is required before starting the course but it is expected that you will have an inquisitive outlook on everyday life. Those that thrive in Sociology do not take the everyday happenings of life for granted and look for the reasons as to why things happen in the way that they do.

## How will I be examined?

Students will be assessed through two written exams:

Component 1: 1 hour 45 minutes, 100 marks - 50%

Component 2: 1 hour 45 minutes, 100 marks - 50%

## Who can I talk to for more information?

If you have any questions regarding GCSE Sociology then please do not hesitate to come and find Mr Bishop (Course Leader) who will always be happy to help.

[t.bishop@shenfield.essex.sch.uk](mailto:t.bishop@shenfield.essex.sch.uk)



**What can I do after the course? What careers will this course be useful for?**

It was recently quoted in the news that employers are looking for students that have studied subjects such as Sociology. Sociology is relevant to a range of career paths including social work, policing, policy making and journalism.

Students who achieve a GCSE in Sociology will find that employers see it as a valuable qualification as it will give you an enhanced outlook on a range of social issues.

**ADVICE WORKER, COMMUNITY DEVELOPMENT WORKER, TEACHER, HOUSING MANAGER/OFFICER, MARKETING EXECUTIVE, POLICE OFFICER, POLICY OFFICER, SOCIAL RESEARCHER, SOCIAL WORKER, YOUTH WORKER, CHARITY OFFICER, CIVIL SERVICE ADMINISTRATOR, FAMILY SUPPORT WORKER, HUMAN RESOURCES OFFICER, LIFE COACHING, JOURNALIST, BROADCASTING, RESEARCHER**

**What websites can I check out?**

[GCSE Sociology | Eduqas](#)

[Sociology | Sociology | tutor2u](#)

“ You can never really understand an individual unless you also understand the society, historical time period in which they live, personal troubles, and social issues.”

C. Wright Mills



## OPTION SUBJECT—2 GCSE EQUIVALENT

### EDEXCEL GCSE Statistics and AQA Further Maths

# STATISTICS AND FURTHER MATHS

#### What will I learn in Statistics and Further Maths ?

This option allows you to gain two qualifications in Statistics and Further Maths. Each course will be taught for one year. In Year 10 you will complete Edexcel GCSE Statistics, in year 11 you will study AQA level 2 Further Maths. At the end of each course, you will complete the respective exams during the summer examination period.

**Statistics** – by completing investigations using the Statistical Enquiry Cycle you will learn to collect and represent information, calculate summary statistics and probabilities. Such skills will allow you to interpret statistical information and draw conclusions in context with statistical reasoning. By the end of the course, you will be able to assess the appropriateness of statistical methodologies.

**Further Maths** - This qualification fills the gap for high achieving students by assessing their higher order mathematical skills, particularly in algebraic reasoning, in greater depth, thus preparing them fully to maximise their potential in further studies at Level 3. It offers the opportunity for stretch and challenge that builds on the Key Stage 4 curriculum.

#### What do I need to know before I can start the course?

You must have a keen interest in Mathematics.

You must demonstrate a good understand of KS3 Maths and be particularly confident in areas such as Ratio and Proportion and Probability. These are key skills that will be built upon within your Statistics year. Further Maths covers areas of algebra and geometry in greater depth and breadth, which are crucial to further study in the subject.

You should consider taking this option if you are;

- expected to achieve grades 7, 8 or 9 in GCSE Mathematics
- are likely to progress to A-Level study in Mathematics and possibly Further Mathematics.

#### How will I be examined?

A single Statistics exam will take place at the end of Year 10 during the summer exam period.

Two Further Maths exams, Calculator and Non-Calculator, will take place at the end of Year 11 during the summer exam period.



### What can I do after the course? What careers will this course be useful for?

Studying Statistics and Further Maths at GCSE level will prepare you for A-level Maths, A-level Statistics and A-level Further Maths, which in turn will prepare you for any Degree level learning you may wish to pursue. Mathematics qualifications are sought after in any profession, and careers involving Mathematics are vast but may include:

**ACTUARY, DATA ANALYST. DATA SCIENTIST, FINANCIAL RISK ANALYST, INVESTMENT ANALYST, ACOUSTIC CONSULTANT, ACTUARIAL ANALYST, ASTRONOMER, CHARTERED ACCOUNTANT, RESEARCH SCIENTIST (MATHS), SECONDARY SCHOOL TEACHER, SOFTWARE ENGINEER, SOUND ENGINEER, STATISTICIAN**

### Who can I talk to for more information?

Mr Dennehy (Team Leader) – [n.dennehy@shenfield.essex.sch.uk](mailto:n.dennehy@shenfield.essex.sch.uk)

Miss Albery (Course Leader: Key Stage 3) – [l.albery@shenfield.essex.sch.uk](mailto:l.albery@shenfield.essex.sch.uk)

Mr Russell (Course Leader: Key Stage 4) – [p.russell@shenfield.essex.sch.uk](mailto:p.russell@shenfield.essex.sch.uk)

### What websites can I check out?

[Edexcel GCSE Statistics \(2017\) | Pearson qualifications](#)

[AQA | AQA Certificate | Level 2 Further Mathematics | Introduction](#)

“Statistics may be defined as a body of methods for making wise decisions in the face of uncertainty.”

W. Allen Wallis



## OPTION SUBJECT—1 GCSE EQUIVALENT

# OCR Award in Enterprise and Marketing

# ENTERPRISE AND MARKETING

### What will I learn in Enterprise and Marketing?

#### Unit 1 - Enterprise and Marketing Concepts.

(Weighting 40% - externally assessed written paper)

Setting up and running a new business is an exciting challenge. To prepare you for this you will learn about the key factors to consider and activities that need to happen to operate a successful small start-up business. In this unit you will focus on how market research gives an entrepreneur an insight into the wants and needs of its customers, so that products can be developed to satisfy them. You will also learn about the main elements of the marketing mix, different types of ownership and key characteristics of successful entrepreneurs. You will also explore the sources of capital available to businesses and methods used to assess if a business is financially viable.

#### Unit 2 - Design a Business Proposal. (Weighting 30% - internally assessed)

In this unit you will learn how to develop market research tools and use these to complete market research. This research will then be used to identify your target market, create a design mix and produce product design ideas. To help on your final design idea you will gain feedback and then assess the strengths and weaknesses of your initial ideas. To finalise this unit, you will complete financial calculations to decide whether your proposal is likely to make a profit and be financially viable.

#### Unit 3 - Market and Pitch a Business Proposal.

(Weighting 30% - internally assessed)

In this unit you will learn how to design a brand which will make your product stand out in the market, before creating a promotional campaign to get your brand noticed by customers. You will then create a presentation that you will pitch to an audience. After delivering your pitch you will reflect on your pitching skills, your brand, your promotional campaign and likely success of your product.

### What do I need to know before I can start the course?

No previous knowledge is required, but an interest in Business and good organisational skills would be an advantage.

### Who can I talk to for more information?

Miss Weeden (Course Leader) email: [j.weeden@shenfield.essex.sch.uk](mailto:j.weeden@shenfield.essex.sch.uk)

## How will I be assessed?

For internally assessed units you will be given assignments set by OCR, that are completed within set time periods under supervised conditions in the classroom. These assessments may include written reports, presentations, interviews, brochures etc. Before the assignments are set, lessons will involve theory input and guidance on how to prepare for the supervised assessment. The assignments completed in the supervised assessments will then be marked by your teacher and then you may have one opportunity to resubmit your work for your final grade.

For the externally assessed unit you will complete an examination in the exam hall, under supervised conditions during a period timetabled by the exam board. The question paper is 70 marks and 1 hour and 15 minutes long. The exam paper has two parts:

- Part A - includes 10 multiple choice questions
- Part B - includes short/medium answer questions and one extended response question marked by levels of response.

An overall grade for the qualification will be awarded to all students who successfully complete all units. The grades given for an OCR Cambridge National in Enterprise and Marketing are a Pass, Merit, Distinction or Distinction\*.

## What can I do after the course? What careers will this course be useful for?

Students gaining an OCR Cambridge National in Enterprise and Marketing will have access to a range of career and further education opportunities. You will use a variety of skills throughout the course, including researching, problem solving, decision making, innovation, project management, team working and communication.

Students who prefer this way of working will also be excellently placed for further study under the BTEC scheme – most obviously the BTEC Extended Diploma in Business (equivalent to three A Levels) in the Sixth Form.

An OCR Cambridge National in Enterprise and Marketing is ideal for students wanting to develop applied knowledge and practical skills in setting up and running a successful business enterprise.

**ACCOUNTING, ADMINISTRATION, CUSTOMER SERVICE, MANAGEMENT TRAINEE, FINANCE AND IT, RETAIL OR SALES, MARKETING, HUMAN RESOURCES, HOSPITALITY/RETAIL MANAGEMENT**

## What website can I check out?

[Cambridge Nationals - Enterprise and Marketing Level 1/Level 2 – J837 - OCR](#)

“Dream big. There is nothing seen that wasn't imagined. There's no overnight success. You have to start dreaming big and working towards your goal.”

Folorunso Alakija



## OPTION SUBJECT—1 GCSE EQUIVALENT

### OCR Award in Health and Social Care

# HEALTH AND SOCIAL CARE

#### What will I learn in Health and Social Care?

The qualification gives you the opportunity to develop real world skills to prepare you for your future. This is done by learning about topics that cover care in health and social care settings and learning about different life events, as well as giving you the opportunity to learn about creative and therapeutic activities and looking into health promotion campaigns.

This is covered with 3 units:

#### Unit 1 – RO32 - Principles of Care in Health and Social Care Settings.

You will learn about the different rights that people have within health and social care, what this means to people receiving person centred care and why this is vital for them. You will also learn about different skill sets that health and social care workers require.

#### Unit 2 – RO33 - Supporting Individuals through Life Events

In the journey of life, you experience many life changing events. Throughout this unit you will learn what they are, how they can impact on us and how this can affect the growth and development of a human.

#### Unit 3 – RO34 – Creative and Therapeutic Activities

This unit covers what different types of activities can be used in order to help people that require it. In this topic you will develop skills that will be essential if you wish to go on and work with adults or children. You will then need to plan your own activity and deliver this.

#### What do I need to know before I can start the course?

There is no work experience requirement for this course.

#### How will I be assessed?

- RO32 RO32 is an exam which 40% of your grade Externally Assessed
- RO33 RO33 is an assignment which is 30% of your grade Internally Assessed, Externally Moderated
- RO34 RO34 is an assignment and delivery of an activity and is worth 30% of your grade Internally Assessed, Externally Moderated





### What can I do after the course? What careers will this course be useful for?

This course can be used in the same way as your GCSEs when applying to Sixth Form and Colleges as it is equivalent to one GCSE. It can also lead onto T – Levels (3 A Level equivalent) and AAQ in Health and Social Care (1 A Level equivalent). *Please note that other qualifications (Ext Dip and Ex Cert) are going to be replaced from 2024.*

This course is for students that feel that they would like to work in a profession linked to health and social care such as:

**OCCUPATIONAL HEALTH, CARE MANAGER, COMMUNITY DEVELOPMENT OFFICER, FAMILY SUPPORT WORKER, SOCIAL WORKER, YOUTH WORKER, ALLIED HEALTH PROFESSIONAL, NURSING, COUNSELLOR, SPEECH & LANGUAGE THERAPIST, MENTAL HEALTH MENTOR, NANNY**

### Who can I talk to for more information?

Mrs Marks (Course Leader) email: [a.marks@shenfield.essex.sch.uk](mailto:a.marks@shenfield.essex.sch.uk)

### What website can I check out?

**OCR Level 1/Level 2 Cambridge National in Health and Social Care specification**

“A modern health and social care system has to be completely focussed on the needs of its users.”

Patricia Hewitt



## OPTION SUBJECT—1 GCSE EQUIVALENT

# NCFE Technical Award in Engineering

# ENGINEERING

### What will I learn in Engineering?

By studying the engineering process from end to end, pupils will learn core skills such as production planning techniques, Computer-Aided Design (CAD) and engineering drawing and applied processing skills and techniques. These skills will help them to begin their journey into further study or a career in engineering.

The course provides opportunities for you to develop an understanding of the important role that engineers play in our fast changing world. You will have the opportunity to understand the properties and uses of a variety of engineering materials such as metals, woods and polymers. Analysing existing engineered products by looking at their form, function, the manufacturing environment, manufacturing processes and their environmental impact and then proposing design solutions to meet the requirements.

This subject will enable you to develop your independent personal learning and thinking skills. These are the types of skills sought by employers in a variety of industries. Your understanding and knowledge of the importance of health and safety, relating to legal and industrial requirements within the working environment, will stand you in good stead if you chose to work within an engineering sector.

The structure of the course will allow for the knowledge and skills gained from the lessons to be tested in a series of practical projects where you will design and produce solutions to engineering problems.

### How will I be assessed?

Non-Exam Assessment (60%) is done through an interactive portfolio consisting of a written report, presentation and the fabrication of an engineering product and a written exam (40%) on the knowledge and skills you have learnt.

### What websites can I check out?

[v-certs-14-16-schools-offer.pdf \(ncfe.org.uk\)](#)

[Careers in engineering - A beginner's guide \(theengineer.co.uk\)](#)

[Construction Is A Career Like No Other | Go Construct](#)

## What do I need to know before I can start the course?

Engineering by its very nature is a practical subject and has practical work associated with it. This is complimented by having direct links to the STEM activities and competitions that the school enters, such as the Rocket building competition and the Soap Box building competition. Further information on STEM activities can be found on our website or by asking a member of the science and engineering staff.

You will need to have an enquiring mind about how products are manufactured, where the raw materials come from, why those materials are chosen and how they are developed into functional products. To be successful you will need the ability to be organised, work independently and creatively, work within a time scale, work as a team, and make independent decisions. To achieve a Pass, Merit or Distinction grade in Engineering you will need to have achieved a good grade in Mathematics and Science. The work you have done at KS3 in Science and Mathematics should serve you well in this respect.

## What can I do after the course? What careers will this course be useful for?

Completion of the Engineering course could lead into engineering sectors and careers such as:

**AEROSPACE, AGRICULTURAL AND BIOSYSTEMS,  
BIOENGINEERING AND BIOMEDICAL SYSTEMS,  
ELECTRICAL, ENVIRONMENTAL, INDUSTRIAL,  
MANUFACTURING, MATERIALS SCIENCE,  
MECHANICAL, PLANT, NUCLEAR, PETROLEUM,  
AUTOMOTIVE, COMPUTING AND IT, DEFENCE  
ENGINEER, DESIGN, INFRASTRUCTURE, NUCLEAR**

The possibilities are endless as Engineering has a large amount of transferable skills in industry and as a career choice. It is worth noting that 25% of all job postings in the UK are for engineering roles\*

**\*Engineering skills needs – now and into the future**

## Who can I talk to for more information?

Mr Hall (Course Leader) email: [ma.hall@shenfield.essex.sch.uk](mailto:ma.hall@shenfield.essex.sch.uk)

“ We are showing people that engineering isn't just the physics of how a transistor works. It's using the technology, and being creative with it, and solving problems that people have or creating something beautiful with it. And I think that's opening up engineering to a whole new group of people that maybe never would have thought that engineering was for them. ”

Limor Fried



## OPTION SUBJECT—1 GCSE EQUIVALENT

### NCFE Technical Award in Music Technology

# MUSIC TECHNOLOGY

#### What will I learn in GCSE ?

The course provides you with the opportunity to explore all forms of Music Technology including sequencing, recording, manipulating sound and mixing. The course has been designed to incorporate a broad range of activities focusing on giving you a nationally recognised qualification that can be used to enter employment or as a stepping stone to further learning within Higher Education.

You will learn:

- The developing place of Music Technology within the ever growing Music Industry.
- How musical styles have been influenced and have developed through Music Technology.
- Use of Sound Design in different forms of media such as Film, TV, Radio and Video Games.
- Studio and Live Recording.

#### What do I need to know before I can start the course?

You should have a genuine interest in Music Production and a passion for music. The course requires some musical understanding. You do not need to be able to play an instrument, however you will develop basic keyboard skills.

#### How will I be assessed?

Much of the course is coursework which is assessed through the creation of a portfolio of evidence. This will include presentations, audio recordings, screencasts, live assessment results and project work. All pieces of work will be awarded a Pass, Merit or Distinction. In Year 11 students will be given a practical Synoptic Assessment based on the content covered during the course. This will be assessed internally and sampled externally. Students will also sit one examination at the end of the course.

#### Who can I talk to for more information?

Mr Willsher (Team Leader) email: [p.willsher@shenfield.essex.sch.uk](mailto:p.willsher@shenfield.essex.sch.uk)



**What can I do after the course? What careers will this course be useful for?**

At the end of the course you may choose to study Music Technology at A Level. Alternatively, you could seek employment at a record label, theatre, sound studio or as a technician. The course is designed to improve workplace skills such as communication, planning, meeting deadlines, group working, confidence and organisation.

**AUDIO VISUAL SPECIALIST, MUSIC PRODUCER, MUSIC DIRECTOR, MEDIA AND EVENT SUPPORT SPECIALIST, KEYBOARD AND STUDIO RECORDING SPECIALIST, MUSIC INSTRUCTOR, STUDIO ENGINEER, STUDIO MANAGER, DIRECTOR OF AUDIO/VISUAL EVENTS, AUDIO AND LIGHTING TECHNICIAN, RECORDING ARTIST, MULTIMEDIA SPECIALIST, MUSIC PROGRAMMER**

**What website can I check out?**

**[NCFE Level 1/2 Technical Award in Music Technology](#) | [NCFE](#)**

**“Electronic music is innately tied to the technology used to create it—as the tools evolve, so will the art.”**

**Richie Hawtin**



## OPTION SUBJECT—1 GCSE EQUIVALENT

### WJEC Technical Award in Performing Arts

# PERFORMING ARTS - DANCE PATHWAY

#### What will I learn in Performing Arts - Dance Pathway?

During this course you will learn a range of skills and techniques that you can transfer to your working life, no matter what career you choose, including confidence, teamwork and commitment. Students are given the opportunity to plan and create various pieces of work by responding to industry commissions. They will work to a brief commissioned by an arts organisation to plan a variety of performances. This course will aid students in understanding how paid artists secure paid commission jobs as well as gaining a good understanding of the business and management sector of the performing arts industry.

#### What do I need to know before I can start the course?

This course is highly practical and fun but candidates must also be highly reliable and committed as it provides a real-world approach. You must be able to meet deadlines and be responsible for self-managing your workload. You will need an obvious talent and foundation of experience in acting, singing and dancing as this course follows the Musical Theatre pathway. You must be able to pick up and create choreography, follow vocal scores of differing styles, learn script work and explore a variety of characters and be prepared to work both as an individual and as part of a team.

Though this is a practically focused course, there is an element of written work/controlled assessment which requires you to document your knowledge and understanding of each unit through written logs and presentations. There is one externally assessed unit for the entire course.

#### How will I be assessed?

The assessment will be written controlled assessment and performance work. Each unit has a written element that details the process that the students undertake. There is 1 unit which is externally assessed and marked by external examiners.

#### What websites can I check out?

[Level 1/2 Vocational Award in Performing Arts \(wjec.co.uk\)](http://wjec.co.uk)

## Course structure

Unit title	Unit overview
Unit 1: Performing (internal assessment)  30% of overall grade	In response to an externally set brief, learners will work in a group to reproduce an existing piece of Musical Theatre performance work. They are required to undertake a research and rehearsal process in order to reproduce the work to a professional standard.  Candidates are required to submit written controlled assessment as well as perform/present their piece of performance work.
Unit 2: Creating (internal)  30% of overall grade	In response to a brief, learners will work as an individual or part of a group to create an original piece of Dance performance work.  Candidates are required to submit a written controlled assessment as well as perform/present their piece of performance work.
Unit 3: Performing Arts in Practice (external)  40% of overall grade	In response to an externally set brief, learners are required to plan, promote, pitch and evaluate a piece of Dance performance work in response to an industry commission.  Candidates are required to submit a written controlled assessment as well as perform/present their piece of performance work.

## What can I do after the course? What careers will this course be useful for?

- You may decide to continue your studies with a Level 3 Performing Arts or Dance course.
- You may simply apply the transferable life skills you have developed in any career
- You may want to pursue a career in the Performing Arts Industry
- You could also use the vocational qualification as entrance into a Performing Arts School.

**DANCER, STUNT PERFORMER, EVENTS MANAGER,  
PERSONAL TRAINER, VIDEO EDITOR, PLAY  
THERAPIST, CHOREOGRAPHER, DANCE  
MOVEMENT PSYCHOTHERAPIST, TV/FILM  
ASSISTANT PRODUCTION CO-ORDINATOR,  
CIRCUS PERFORMER, COMMUNITY ARTS WORKER**

## Who can I talk to for more information?

Ms Sherwood (Team Leader) email: [e.sherwood@shenfield.essex.sch.uk](mailto:e.sherwood@shenfield.essex.sch.uk)



Dance is art; paint your



# Looking ahead to Sixth Form

## LOOKING AHEAD TO SIXTH FORM

This page shows A-level and BTEC courses currently offered at Shenfield High School Sixth Form. It also includes the subject specific criteria students will need to be able to access that course this year.

Please note subjects offered and entry criteria are reviewed every year.

Subject	Subject criteria
Art - Fine Art	GCSE grade 5 in Art.
Art - Photography	GCSE grade 5 in Art.
Biology	Any GCSE combined science grade 7. GCSE Biology, if studied, grade 7. GCSE Maths grade 6.
Business Studies	GCSE grade 5 in English and Mathematics. GCSE Business Studies, if studied, grade 5 or a Merit in OCR Enterprise and Marketing.
Chemistry	Any GCSE combined science grade 7. GCSE Chemistry, if studied, grade 7. GCSE Maths grade 6.
Computer Science	GCSE Computer Science grade 6 or above. GCSE Maths grade 6 or above preferable.
Drama and Theatre Studies	GCSE grade 6 in Drama and a grade 6 in English. Merit or above in Technical Award (dependent on interview with Head of Department).
Economics	GCSE grade 6 in English Language or Literature and 5 in Mathematics.
English Language	GCSE grade 6 in English Language or English Literature.
English Literature	GCSE grade 6 in English Language or English Literature.
Film Studies	GCSE grade 5 in English Language and Literature.
Geography	GCSE grade 6 in Geography. Grade 5 in English and Maths.
History	GCSE grade 6 in History and a grade 5 in GCSE English.
Law	GCSE grade 6 in English and a grade 6 in another written-based subject.



Mathematics	GCSE grade 7 in Mathematics.
Media Studies	GCSE grade 5 in English Language and Literature.
Music	GCSE grade 6 in Music preferably. Merit or above in NCFE Technical Award in Music plus performance standard equivalent to Grade 5.
Music Technology	GCSE Music Minimum Grade 5 or Merit or above in NCFE Technical Award in Music. It is also desirable that students play an instrument, but not essential.
Philosophy	Grade 6 in GCSE English and a grade 6 in another predominantly written based subject.
Physical Education	A grade 6 in GCSE Physical Education and a grade 6 in any GCSE Science. Students who did not do GCSE PE will be considered if they achieved a grade 6 in science. Regular (at least weekly) sports participation is essential.
Physics	Any GCSE combined science grade 7. GCSE Physics, if studied, grade 7. GCSE Maths grade 7 and ideally be looking to follow the A-Level Mathematics course.
Politics	Grade 5 or above in English as well as a grade 5 in another written subject.
Psychology	GCSE grade 6 in a Science subject (preferably Biology), grade 6 in English and grade 6 in Mathematics.
Sociology	A grade 6 at GCSE English Language or English Literature and a grade 6 in another predominately written-based subject (English Literature, History, Geography, Religious Education etc). If the student has taken Sociology at GCSE they will need a minimum of a grade 6 (this can also count as their other predominately written-based subject).
Spanish	GCSE grade 6 in Spanish and GCSE grade 5 in English.
BTEC Extended Diploma in Business	Six GCSEs at grade 4. If you have previously studied Business Studies, you will need to have obtained a grade 4 in GCSE Business or a Merit at Level 2 Vocational Business. At least a grade 4 in English and Mathematics at GCSE is also necessary.
BTEC Extended Diploma in Sport and Exercise Science	Six GCSEs at grade 4 to include a grade 5 in GCSE Physical Education, a grade 5 in Science and a grade 5 English Language or Literature. A keen interest in sport is a necessity.
BTEC Extended Certificate in Music (Performance)	GCSE Music at grade 5 or above (desirable). We will consider any application regardless of formal qualifications, but an audition is likely before acceptance onto the course. Performance at Grade 5 (equivalent) or above is also desirable.
BTEC Extended Certificate in Sport	Grade 5 in Physical Education at GCSE. A keen interest in sport is a necessity.

“Learning is about living and as such is lifelong.”

Bente Elkjaer



# Timeline of Option Process

# TIMELINE OF OPTION PROCESS

Year 9 Options  
Launch



Year 9 Parents'  
Evening



Year 9 Options  
Evening

\*2024 - 2026 Option  
blocks finalised

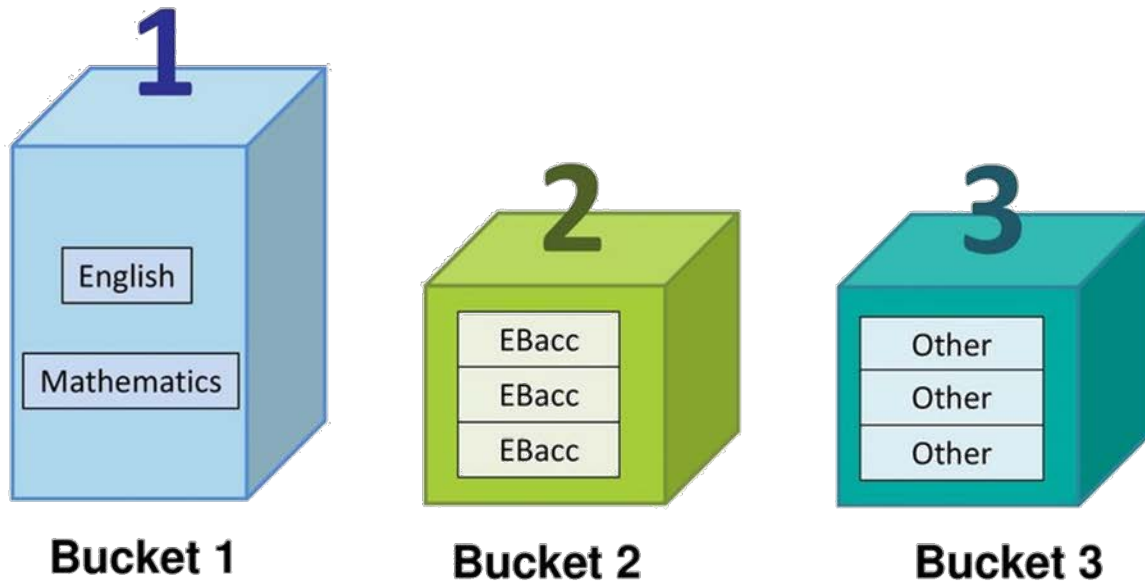


\*Deadline for  
Option Choices to  
be submitted  
online

\*Some students may  
have to change their  
choices

## Check your options (DfE Guidance)

The DfE policy is that school performance will be measured on the average GCSE points score for students across 8 subjects.



8 subjects comprise of:

- Two core subjects of English and Mathematics.
- At least three subjects from Sciences, Computer Science, Geography, History and Modern Foreign Languages.
- A further three subjects from:

### GCSE subjects

Fine Art	Business Studies	Computer Science
Drama	Film Studies	Food Preparation and Nutrition
French	Geography	History
Music	Physical Education	Sociology
Spanish	Statistics and Further Maths	

### Vocational subjects

Enterprise and Marketing	Health and Social Care	Engineering
Music Technology	Performing Arts:Dance Pathway	

“Education is lifelong learning adventure.”

Lailah Gifty Akita



# Submitting your options

# SUBMITTING YOUR KEY STAGE 4 OPTIONS CHOICES

- To submit your Option subject choices, you need to access the Options Form within EduLink. To access EduLink select [www.edulinkone.com](http://www.edulinkone.com) on your internet browser, or if at home, you can open the App on your phone or tablet.

## EduLink One

Please note that the Option Form will become available to students online on the 8th March 2024.

### Student login:

- Enter the word 'shenfield' as the school ID. In the Username box enter your school computer login (a 4 digit number), and in the Password box enter your school computer password. This is the same login and password that you use to access the school computers and your school emails.
- This will take you to your EduLink homepage, where you need to click the green 'Forms' icon from the EduLink wheel.
- Click on 'Key Stage 4 Options' and this will open your Options selection form as follows

Key Stage 4 Options

Please use this form to submit your Key Stage 4 Option subject choices.

To assist with your decision making, please click [here](#) to access the KS4 Options Booklet. In addition, please attend the KS4 Options Evening .

You need to select the following:

- ONE subject from the DIRECTED CHOICE list
- THREE subjects from the OPEN CHOICE list - these MUST be listed in preference order
- TWO subjects from the RESERVE CHOICE list - these will be used if your Main choices are unavailable

Please note:  
You cannot select the same subject more than once.  
The order of your subjects is very important as this will be used when subjects are at capacity.  
The following subjects cannot be studied together, but can be chosen as a Main and a Reserve:  
Business GCSE / Enterprise & Marketing vocational course  
Drama GCSE / Performing Arts vocational course  
Music GCSE / Music Technology vocational course

This form will only submit once you have selected all of your Option choices, you cannot save it part way through. Once you have submitted this form, you WILL NOT be able to make any changes.  
To make changes to your Option choices once you have submitted this form, please visit the Data Office (in South Hall), or email Mrs Mason ([m.mason@shenfield.essex.sch.uk](mailto:m.mason@shenfield.essex.sch.uk)).

This form must be submitted by 3pm on the deadline date.

DIRECTED CHOICE - Choose ONE of the following subjects:\*

Select

OPEN CHOICE 1 - Choose your most preferred subject:\*

Select

OPEN CHOICE 2 - Choose your second most preferred subject:\*

Select

OPEN CHOICE 3 - Choose your third most preferred subject:\*

Select

RESERVE CHOICE 1 - Choose your first reserve subject - this may be used if your Main choices are unavailable:\*

Select

RESERVE CHOICE 2 - Choose your second reserve subject - this may be used if your Main choices are unavailable:\*

Select

You can only submit this form once ALL of your Option selections have been made, you cannot save it part way through.

Once the form is submitted, you WILL NOT be able to make changes to your selections.

Please remember:

- You need to select ONE Directed subject, THREE Open subjects and TWO Reserve subjects
- You cannot select the same subject more than once
- The order of your subjects is very important as this will be used when subjects are at capacity
- The following subjects cannot be studied together, but can be chosen as a Main and a Reserve
- Business GCSE / Enterprise & Marketing Vocational Award
- Drama GCSE / Performing Arts Vocational Award
- Music GCSE / Music Technology Vocational Award

If you experience any issues logging into EduLink, please contact your form tutor.

If you wish to make changes to your Option subjects after you have submitted your form, please visit the Data Office (in South Hall) or email [m.mason@shenfield.essex.sch.uk](mailto:m.mason@shenfield.essex.sch.uk)

**The form must be submitted online by 3pm on Friday 22nd March.**



“Learning is a treasure that will follow its owner everywhere.”

Chinese proverb



**Options checklist 2024**

**OPTIONS CHECKLIST 2024**

**KEY STAGE 4 OPTIONS CHECKLIST 2024**

To help you decide your options, please see the option form below. Some ticks have been completed for you because some criteria are met by the core subjects at Key Stage 4. Use this hardcopy to review your choices to meet the government's expectation for a broad, balanced curriculum and then submit your final choices online **by Friday 22<sup>nd</sup> March 2024.**

Criteria	Subjects	
<b>These subjects are compulsory</b>	English Language <input checked="" type="checkbox"/>	Maths <input checked="" type="checkbox"/>
	English Literature <input checked="" type="checkbox"/>	Social Sciences (non-examinable) <input checked="" type="checkbox"/>
	GCSE Science <input checked="" type="checkbox"/>	PE (non-examinable) <input checked="" type="checkbox"/>
<b>Choose 1 directed choice by ticking one of the boxes</b>	Geography <input type="checkbox"/>	French <input type="checkbox"/>
	History <input type="checkbox"/>	Spanish <input type="checkbox"/>
	Computer Science <input type="checkbox"/>	
<p><b>Choose 3 main and 2 reserves.</b></p> <p><b>Indicate your preferred subject choices by <u>numbering choices 1 to 5.</u> Choices 4 and 5 will be reserve choices and will be used if your preferred options are unavailable. The ranking of subjects is very important and will be used when subjects are at capacity.</b></p> <p><i>Please note the following subjects cannot be studied together but can be put as a main or reserve:</i>  <b>Business GCSE/Enterprise</b>  <b>Drama GCSE/Performing Arts</b>  <b>Music GCSE/Music Technology</b></p>	<b>GCSEs:</b>	
	Fine Art <input type="checkbox"/>	Spanish <input type="checkbox"/>
	Business <input type="checkbox"/>	Triple Science <input type="checkbox"/>
	Computer Science <input type="checkbox"/>	Statistics & Further Maths <input type="checkbox"/>
	Drama <input type="checkbox"/>	<b>BTECs:</b>
	Film Studies <input type="checkbox"/>	Health and Social Care <input type="checkbox"/>
	Food Technology <input type="checkbox"/>	<b>Vocational Awards:</b>
	French <input type="checkbox"/>	Enterprise <input type="checkbox"/>
	Geography <input type="checkbox"/>	Engineering <input type="checkbox"/>
	History <input type="checkbox"/>	Music Tech <input type="checkbox"/>
	Music <input type="checkbox"/>	Performing Arts <input type="checkbox"/>
	PE <input type="checkbox"/>	
	Sociology <input type="checkbox"/>	



SHENFIELD HIGH SCHOOL 2024 - 2026



Shenfield High School  
Alexander Lane  
Shenfield  
Essex  
CM15 8RY



01277 219131



[www.shenfield.essex.sch.uk](http://www.shenfield.essex.sch.uk)

