



SHENFIELD HIGH SCHOOL

TEACHER OF BOYS PE

SEPTEMBER 2025

Information for candidates

L E A R N I N G F O R L I F E

Teacher of Boys PE

Required September 2025

MPS (suitable for ECTs)

The Role

Required for September 2025 a talented and skilled teacher of PE with football specialism who has the energy and commitment to contribute to the high calibre, extensive physical education offer we have at Shenfield High School.

Such is the success of PE at Shenfield High School, it is too much to detail within this advert and so we have added an appendix at the end! Suffice to say we are one of the top state schools in the country for sport in terms of participation, breadth and success. Interested candidates are encouraged to visit SHSPEDEPT1 on X (Twitter) and our school newsletters, which can be viewed via our website, to appreciate the full extent of the engagement and achievement of students within PE at Shenfield High School. If you feel that you want to contribute to this extensive offer, then we encourage you to apply. In return, your practice will undoubtedly be supported and developed by working with such an excellent team of committed staff and students.

Our School

Shenfield High School is a standalone 11-18 Academy with a comprehensive ethos and commitment to high academic standards supported by a significant investment in pastoral care and wellbeing.

The school is conveniently located close to Shenfield main line station on the line into London Liverpool Street and home to the eastern terminus of the new cross rail Elizabeth Line.

We can offer you:

- Outer Fringe allowance
- A 'Golden Hello' if you are a direct applicant to the school
- Competitive teaching allocation (all teaching allocations were reduced across the board in 2023-24)
- Employee Assistance programme
- Continuous CPD programme including NPQs and National College qualifications
- A 'Year 3' ECT programme providing continued support if recently qualified
- Sponsorship for overseas teachers

We can also offer you:

- A chance to work alongside an enthusiastic and dedicated PE department
- Supportive onboarding
- An all-inclusive and diverse organisation
- A chance of further or future development towards higher TLRs or SLT
- A chance to be part of the school's drive to increase and support student engagement
- The benefit of a multi-disciplinary team including a strong and experienced SEN team, teaching assistants, a student support officer, student support wellbeing lead and more...

If you would like an informal discussion about this position and/or a pre-application visit please contact the Headteacher's PA, Mrs Watson: c.watson@shenfield.essex.sch.uk

The Governing Body is committed to safeguarding and promoting the welfare of children and young people and expects all staff to share in this commitment. This appointment is subject to an enhanced disclosure check and positive references.

Application details from the school's website: www.shenfield.essex.sch.uk. Please apply using the application form and a covering letter that outlines how your experience and skills fulfil the job description and person specification. CVS also welcome in the first instance.

Closing Date is Monday 19th May at midday.

Job details

Start date: September 2025

Salary: MPS – UPS

Contract type: Full or part-time availability will be considered

CLOSING DATE: 19th May 2025 (midday)

Please apply using the application form and a cover letter that outlines how your experience and skills fulfil the job description and person specification; CVs are also welcome in the first instance.

Application forms found on the school website - www.shenfield.essex.sch.uk.

Please Note - Applications will be assessed upon receipt and we reserve the right to interview and appoint prior to the closing date. Early applications are therefore strongly advised. References will be requested prior to interview.

Shenfield High School is committed to creating a diverse workforce. We'll consider all qualified applicants for employment without regard to sex, race, religion, belief, sexual orientation, gender reassignment, pregnancy, maternity, age, disability, marriage, or civil partnership.

JOB DESCRIPTION: PE TEACHER

Reporting to: Course Leader & Line Manager

Overall Purpose of Post

All teachers are accountable to the Headteacher through their Line Manager. The post holder will be expected to perform the following duties and meet the teaching responsibilities as set out in the School Teachers' Pay & Conditions Document (STPCD) and to the quality as laid out in The Teaching Standards/ ECT Framework.

Main purpose

- To implement and deliver an appropriately broad, balanced, relevant curriculum to students and to support the curriculum area as appropriate.
- To monitor and support the overall progress and development of students as a teacher and or form tutor.
- To facilitate and encourage a learning experience, which provides students with the opportunity to achieve their individual potential.
- To contribute to raising standards of student attainment and achievement.
- Share and support the school's responsibility to provide and monitor opportunities for the personal and academic development of children and young people.

Teaching and Learning

Teachers are expected to:

- Plan and prepare schemes of work, courses and lessons, which provide students with the opportunity to achieve their individual potential.
- Teach, according to their educational needs, the students assigned to him/her. This involves setting and marking work for the students to complete in school and elsewhere.
- Assess, record and report on the development, progress and attainment of students.
- Organise and participate in extracurricular activities.
- Ensure the effective deployment of classroom support.
- Monitor and support the overall progress and development of students.
- Contribute to raising standards of student attainment/achievement.
- Apply the Behaviour for Learning Policy so that effective learning for all can take place.
- Maintain an environment which is conducive to learning.

Assessing and Reporting

Teachers are expected to:

- Provide or contribute to oral and written assessments, reports and references relating to individual students and groups of students.
- Maintain accurate and up to date student records.
- Track student progress and use the data to inform teaching.

Standards and Quality Assurance

Teachers are expected to:

- Support the aims, ethos and values of the school
- Be aware of national developments relevant to subject and current best practice.
- Undertake lesson observations as part of the department observation schedule and professional development arrangements.
- Promote and model good relationships with pupils, colleagues and parents.
- Set a good example in terms of dress, punctuality and attendance.
- Uphold the school's behaviour policy and uniform regulations.
- Participate in staff training and take a lead in own professional development.

Other Requirements

- Participate in arrangements made for their performance management.
- Review, from time to time, their methods of teaching and programmes of work.
- Participate in arrangements for their further training and professional development as a teacher.
- Contribute to the department's SEF and development plan and its implementation.
- Assist the Team Leader in identifying resource needs, and to work with the team to ensure that resources are used effectively and shared for the benefit of all students.
- Supervise students outside lesson time in morning and afternoon sessions, for example during lesson changeovers.
- Attend meetings regularly, including parents' evenings, which are part of directed time.
- Maintain good order and discipline among students and attend to their health and safety, both when they are authorised to be on the school premises, and when they are engaged in authorised school activities elsewhere, as well as having regard to safeguarding.

Please note that this list of duties is illustrative of the general nature and level of responsibility of the role. It is not a comprehensive list of all tasks that a teacher will carry out. The postholder may be required to do other duties appropriate to the level of the role.

Person specification

CRITERIA	ESSENTIAL	DESIRABLE
Qualifications and training	<ul style="list-style-type: none"> • Qualified Teacher Status • Degree Level Qualification + Secondary PGCE or QTS Qualification for the Secondary Phase 	<ul style="list-style-type: none"> • Evidence of ongoing professional development • Willingness and desire to undertake further professional development and training
Experience	<ul style="list-style-type: none"> • Experience of planning and teaching Secondary Curriculum • Experience of teaching to a high standard • The ability to promote good progress and outcomes by pupils • The ability to manage behaviour effectively to ensure a good and safe learning environment • An ability to make accurate and productive use of assessment 	<ul style="list-style-type: none"> • Having an extensive knowledge and well-informed understanding of a range of learning, teaching and behaviour management strategies • Experience of teaching with excellent classroom practice and outcomes
Skills and knowledge	<ul style="list-style-type: none"> • The ability to demonstrate good subject and curriculum knowledge ICT competent • Highly effective communication skills with both children and adults, including parents/carers • An ability to identify, focus on and work towards achieving key objectives • Highly effective time management skills and an ability to meet deadlines and work under sustained pressure • Unswerving commitment to implementing whole school/staff policies relating to the safeguarding of children. 	<ul style="list-style-type: none"> • Effective ICT skills • Proven track record of successful teamwork Contributing to the professional development of colleagues e.g. through coaching, mentoring, providing effective feedback, or the delivery of INSET • Involvement in School Improvement Planning processes
Personal qualities	<ul style="list-style-type: none"> • Positive values and attitudes and adopt high standards of behaviour in a professional role • Genuine commitment to high quality teaching • A commitment to equal opportunities and inclusion 	

Notes: N/A

This job description may be amended at any time in consultation with the postholder.

Last review date: 07/05/2025

Next review date: To be confirmed

Headteacher/line manager's signature:

Date:

ABOUT US

"Our vision is to prepare our students to embrace all opportunities and fulfil all ambitions. We strive to ensure our students are known and known well and prepared for a future of lifelong learning"

Shenfield High School is a standalone 11-18 Academy with a comprehensive ethos and a commitment to high academic standards supported by a significant investment in pastoral care and wellbeing.

We have over 1500 students on roll including more than 300 students in our sixth form; this year we have received over one thousand applications for 240 places in year 7 in September 2024.

We offer a broad and rich curriculum from years 7 to 13 with a full commitment to the traditional academic, creative and the physical. Our reputation for sport, both elite and recreational and for our creative arts is second to none for a state comprehensive school. Through the efforts of our highly engaged staff the curriculum runs strongly through into the extracurricular with clubs and activities offered in all areas.



THE PE DEPARTMENT

Shenfield High School's commitment to outstanding provision for PE and Sport has been recognised by achieving the School Games Platinum Award (the only Brentwood Secondary to achieve this). This award is given for the school's provision for curriculum PE as well as the huge range of extra-curricular sporting opportunities for students both within the Shenfield Sports Partnership as well as the students at Shenfield High School.

The students at our school have five hours a fortnight of core PE in Key Stage 3. All students are taught a broad and varied range of activities including Football, Basketball, Gymnastics, Handball, Rugby, Netball, Badminton, Swimming, Cross Country, Health Related Exercise, Cricket, Short Tennis, Rounders & Athletics. We currently have 170 students on the GCSE PE course in year 10 and year 11 and we offer a range of KS5 sports courses: BTEC Sport Extended certificate, BTEC Sports Exercise Science Extended Diploma & A-Level PE.

Shenfield High School have also provided numerous sports trips and tours to provide further opportunities for its students. Our Cricket Academy students 10 days in South Africa during Feb HT and have previously toured Spain and Barbados. The U18 Football Academy continue to tour different parts of America, where we have won international tournaments in previous years. The School's Junior Sports Academy athletes also enjoy a biannual multi sports tour to Spain and these experiences provide invaluable opportunities for students to enjoy the huge physical, social and mental benefits of involvement in sport.

OUR ROLL OF HONOUR FOR THIS ACADEMIC YEAR: 2023-2024

Year 7 / U12 Titles

ESFA U12 Boys Playstation National Schools' Cup

Under 12s Boys Essex Champions

U12 Essex Rugby 7s Shield Winners

U12 Boys district swimming champions

U12 Girls district swimming champions

U12 Girls Athletics Messa Relay Champions

U12 Girls Essex Cup Football Champions

U12 Boys Essex Cup Cricket Finalist

U12 Girls Essex Cup Basketball Runners-Up

U12 Girls District Cross Country Champions

U12 Girls Mid-Essex Cross Country Champions

U12 Lee Valley South-East of England Runner-Up

U12 Girls Indoor Athletics District Champions

U12 Girls District Athletics Champions
U12 Boys Indoor Athletics District Champions
U12 Boys District Athletics Champions
U12 Netball – Brentwood District Winners, Mid Essex Winners, Essex Cup Semi- finalists

Year 8 / U13 Titles

ESFA U13 Girls Playstation Schools' National Cup Champions
U13 Girls Essex Cup Football Champions
U13 National Relay Swimming Finalists
U13 Boys Essex Cup Basketball Champions
U13 Boys Mid-Essex & Essex Cup Football Champions
U13 Boys Indoor Athletics District Champions
U13 Boys ESAA Regional B Champions
Year 8 Boys District Athletics Team Champions
U13 Girls Indoor Athletics District Champions
U13 Girls Essex Cup Basketball Runners Up
U13 girls cricket Essex Cup finalists

Year 9 / U14 Titles

ESFA U14 Girls Playstation Schools' National Cup Champions
ESFA Elite U14 Boys Playstation Schools' National Cup Champions
U14 Girls Essex Cup Football Champions
U14 Boys Essex Cup Football Champions
U14 Boys Essex cup Rugby runners up
U14 Girls Essex Cup Basketball runners up
U14 Girls District Swimming Champions

Year 10 / U15 Titles

U15 Girls Messa Futsal Champions
U15 Boys Messa Futsal Champions
ESAA Regional B Final Champions
U15 Girls Essex Cup Cricket Runners-Up
U15 Girls cricket Essex Cup finalists
U15 Girls Chance to compete runners up

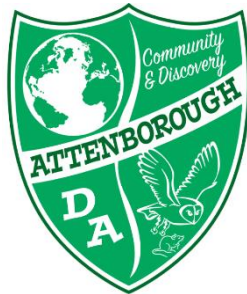
Year 11 / U16 Titles

U16 Boys B ESFA National Cup Runners-Up
U16 Girls Essex Cup Football runners up

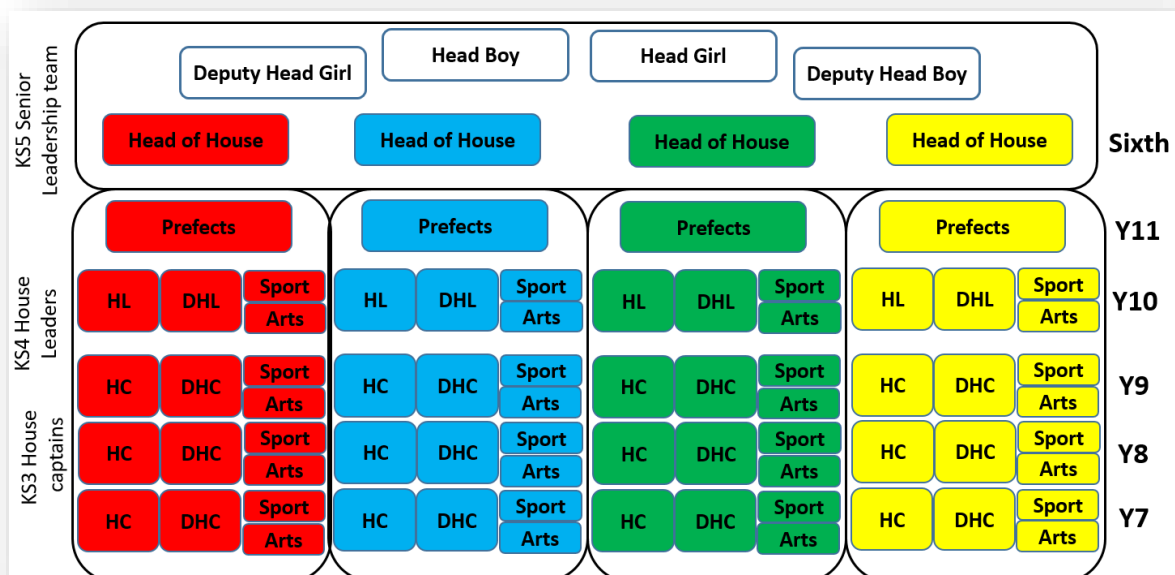
All of the significant achievements in National sports competitions is only possible with lots of hard work by a huge number of students and dedicated staff in morning, lunch and after school extra-curricular clubs. The success has enabled Shenfield to make the top 100 state schools for sport in each of the last eight years as measured by 'School Sport Magazine'. Football success has contributed to this having 12 National Finals in the last three years, winning 5 National Football titles in the previous two seasons.

MORE ABOUT THE SCHOOL

The whole school community has devoted significant time in the past two years revisiting the school values and the House System.



Our school values form the basis of our behaviour and rewards policies and underpin our school culture whilst our House System forms the scaffold for our student leadership structure.





Student Leadership is no more evident than in our Combined Cadet Force (CCF). Our contingent is affiliated with the Royal Anglian Regiment and is the largest school contingent in the country outside of fee-paying schools.



Shenfield High School is a strong community of staff, students, and their parents. Parents are very supportive of the school and recognise the uniqueness of some of the opportunities their children are afforded by attending the school.

As a standalone academy it is our governing body that works in partnership with the Headteacher and senior team in setting the strategic direction of the school. Our governors come from a variety of backgrounds and professions and are very supportive of the school. On the following page you can find an overview of our strategic framework that highlights our key focus areas for the years ahead.

THE APPLICATION PROCESS

The best way to find out about our school is to visit our website and come for a guided tour of the site.

If you are interested in a tour, contact the Headteacher's PA, Mrs Watson

c.watson@shenfield.essex.sch.uk

- **The deadline for applications will be 19th May 2025 (midday)**
- Please visit our website for an application form [Job Vacancies - Shenfield High](#) or email our HR Manager Mrs Kirk e.kirk@shenfield.essex.sch.uk.
- In the personal statement please give your reasons for applying for this post and say why you believe you are suitable for the position. Please take note of the person specification and keep your statement to no more than two sides of A4.
- CVs are welcome in the first instance

Interviews are a two-way process, please ask as many questions as you have and make sure you feel this is the school for you.

If your interest in our school has been piqued by anything you have read here then we would love to hear from you.

We wish you well in your search.

Clare Costello

Headteacher

